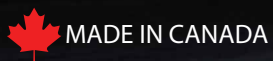




# Nemalux<sup>TM</sup>

Lighting That Improves Worksite Safety



# TABLE OF CONTENTS

## VALUE+

PAGE 3  
INTRODUCTION

PAGE 4-5  
INDUSTRIAL GRADE

PAGE 6-7  
LAYOUT SUPPORT

PAGE 8  
QUICK SELECTION GUIDE

## PRODUCTS

PAGE 10-11  
JR Series | MR Series

PAGE 12-13  
XR Series | AR Series

PAGE 14-15  
GS Series ( AC / DC ) | BL Series

PAGE 16-17  
NL Series | EXC Series

PAGE 18-19  
SPECIALTY / TEMPORARY  
SUPPORT STRUCTURES

PAGE 20  
GET IN-TOUCH

## QR CONTACT



QR CODES OFFER INSTANT ACCESS TO US & OUR PRODUCT DOCUMENTATION. ALL QR CODE LINKS HAVE LIVE CHAT ENABLED FOR REAL-TIME COMMUNICATION WITH OUR TEAM.

REQUEST INFO

## CERTIFICATIONS



UL LLC - SAFETY CERTIFICATION



UL LLC - MARINE RATING



AMERICAN BUREAU OF SHIPPING



INTERNATIONAL DARK-SKY ASSOCIATION



DESIGN LIGHTS CONSORTIUM



INTERTEK ETL CERTIFICATION



LABTEST CERTIFICATION INC.

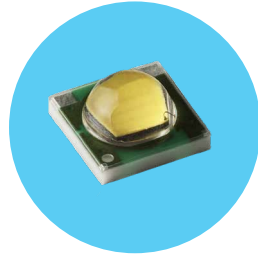
Nemalux  
is the primary  
Canadian  
manufacturer of  
harsh & hazardous  
location  
luminaires

MADE IN CANADA

www.nemalux.com

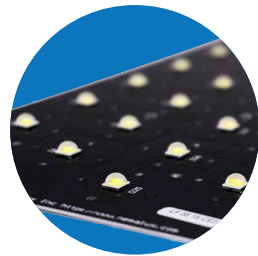


# INDUSTRIAL GRADE



## Light Emitting Diode (LED)

Nemalux uses reliable, high-quality diodes from CREE, Samsung, and Nichia. Underpowering these diodes reduces heat stress and premature aging. Reducing the current flow by 50-70% of the rated max value extends the usable life of LEDs. This increases longevity and reliability in the demanding temperature extremes of harsh and hazardous environments.



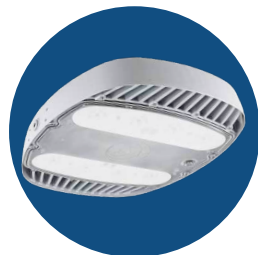
## Light Engine (MCPCB)

A vital part of heat transfer from the LED to the external case is the metal core printed circuit board (MCPCB). This allows for a greater temperature range and extended luminaire performance by minimizing the component temperature increases. When practical the electrical systems utilize redundancy, enhancing reliability. The boards are field serviceable, allowing future upgrades and onsite replacements. They have quick-connect components making them a solder-free installation.



## Secondary Optics

Optical control is instrumental in the lighting design and application process. Our modular optics deliver illumination where required and reduce light pollution. The use of secondary optics provides flexibility and enhances visual comfort. Nemalux's designers can suggest spacing, aiming and mounting heights for each project. As a result, projects receive improved visibility while reducing total cost of ownership.



## Glare Reduction Lenses

Lack of adequate illumination is a common factor affecting safety on industrial sites. Glare and light trespass can also contribute to a lower level of safety. Sharp cutoff and glare reduction lenses from Nemalux provide visual comfort and acuity. Mounting height, tilt angle, and optics are other factors for a positive outcome.



## Power Supplies

Hazardous location rated power supplies are a key part of many Nemalux lights. Programming features deliver tailored lighting effects, balancing thermal management and efficiency. Dimming is available on many luminaires using 0-10V technology. For most power supplies L90 values are a good indicator of system lifetime.



## Housing Design

Nemalux luminaires are constructed with a copper free aluminum alloy. These alloys are very effective heatsinks while resilient to chemicals and salt water. Anodizing or powder-coating provides increased resilience in hazardous and harsh environments. Nemalux's use of specialty powders provides multi-layer protection. This coating can withstand simultaneous exposure to corrosive chemicals, UV, and saltwater. Industrial enclosures can experience dramatic changes in temperature and humidity. Nemalux luminaires use pressure equalization vents with an IP66/67 rating. This helps relieve component stress and minimizes condensation effects. Advanced LED housing designs stimulate convective airflow and debris shedding. This lowers the operating temperatures for all electronics. Resulting in increased system life and ambient temperature range.



## Mounting Hardware

The use of flexible mounting systems is instrumental for an optimized installation process. Nemalux's standard catalog includes an extensive range of brackets specific to each fixture. These diverse mounting options withstand severe vibration, impact, and chemical exposure. Optional secondary safety methods enhance fall protection. Short installation time reduces the cost of fixture placement. Additionally engineering, procurement, maintenance, and installation efforts are reduced.



## Field Serviceability

Nemalux offers many luminaires with field serviceable components. This allows upgrades and maintenance opportunities beyond the warranty period. Bulb and ballast replacements were important for conventional High-Intensity Discharge lights that are designed with service in mind. The emergence of LED technology has caused a shift to non-serviceable / sealed systems. This approach is challenging and forces the disposal of valuable lights. A more effective approach is to replace aging components and extend the system life.



# LAYOUT SUPPORT

Nemalux provides lighting design services for harsh and hazardous locations. These locations include Oil & Gas, Chemical, Mining, Heavy Industrial, Military & Aerospace, Municipal Infrastructure, Rail, and Marine Terminals.

Drawings or basic dimensional details allow lighting designers to run calculations and prepare reports. These illustrate future illumination results. Following suggested luminaire locations and mounting details streamlines the installation process. Supporting the successful delivery of complex projects.

## Why Nemalux?

### Durable Lighting Technology

LED luminaires for harsh and hazardous location use. Human-centric lighting that improves safety and productivity.

### Versatile Deployment Options

Light fixtures featuring various optical and mounting options. Tailored lighting systems to address challenging projects.

### Total Lifetime Value

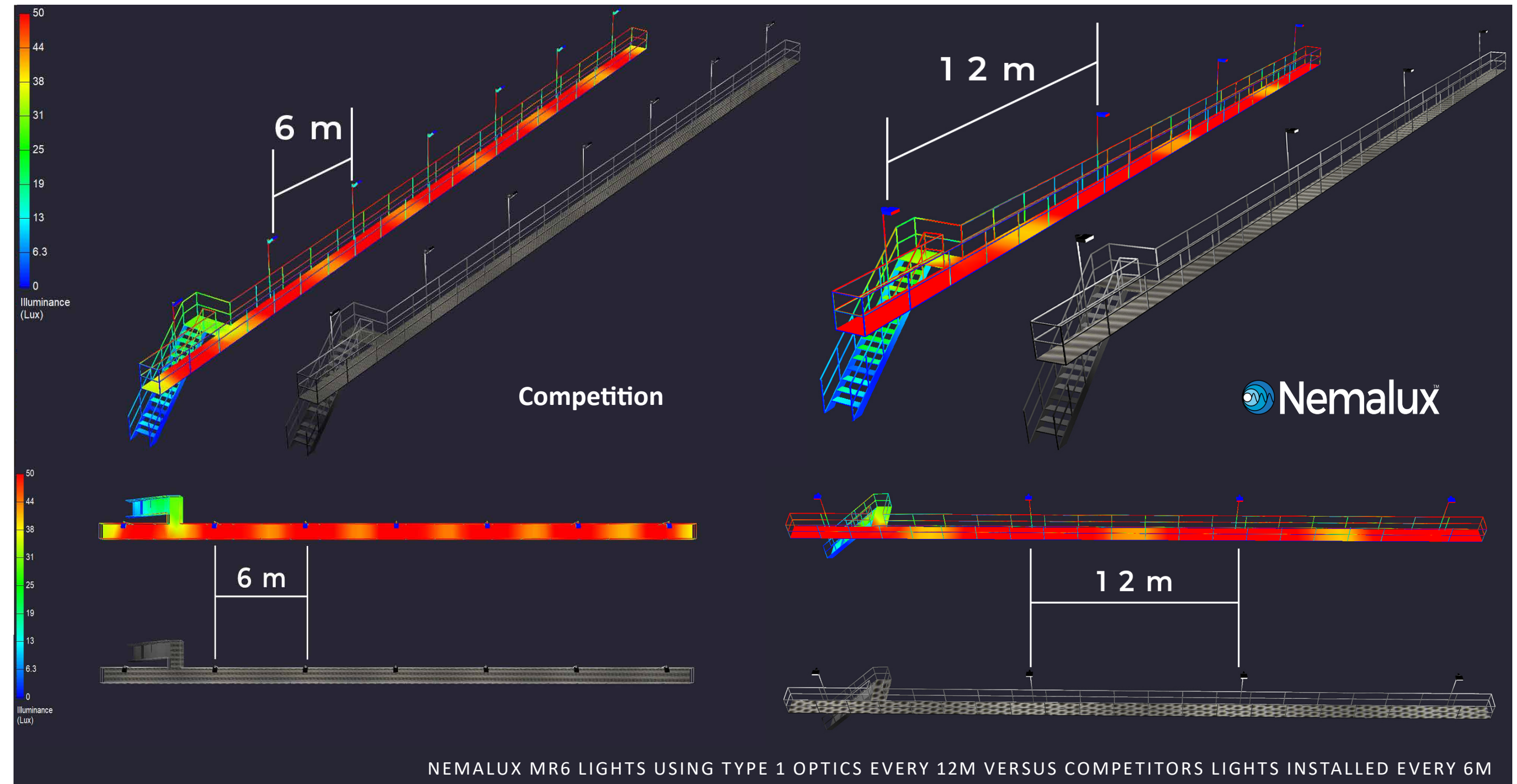
Lower initial cost, simplified installation, and field serviceable components result in excellent value

### Expert Support Services

In-house lighting design and product engineering expertise. Lighting outcome-based philosophy vs a simplistic product-centric approach.

### Short Lead Times


An extensive component stocking program with just-in-time manufacturing from our Canadian facility.







# QUICK SELECTION GUIDE

Application	 Nemalux Model	NEC/CEC CLASS I				NEC/CEC CLASS II					UL 1598A (Marine)	Lumen Output					Lens Material				Colour Temp			Optical Profiles*					Environmental								
		Division 1	Division 2	Zone 1	Zone 2	Division 1	Division 2	Zone 20	Zone 21			Zone 22	500 - 5,000	5,000 - 10,000	10,000 - 20,000	20,000 - 30,000	30,000 - 50,000	Polycarbonate	Glass	Clear	Frosted	3,000 K	4,000 K	5,000 K	Wide Beam	Narrow Beam	Type 1	Type 2	Type 3	Type 4	Type 5	IP66	IP67	IP68**	Low Ambient	High Ambient	
Pole Mount	AR Series		●		●		●			●	●	●			●	●	●		●	●	●	●	●	●	●	●	●	●	●	●	●	●	●	-40°C	+55°C		
	XR Series		●		●		●			●	●	●	●	●	●	●	●	●		●	●	●	●	●	●	●	●	●	●	●	●	●	●	●	-50°C	+75°C	
	MR Series		●		●		●			●	●	●	●	●	●	●	●	●		●	●	●	●	●	●	●	●	●	●	●	●	●	●	●	●	-40°C	+55°C
	JR Series		●		●		●			●	●	●	●	●	●	●	●	●		●	●	●	●	●	●	●	●	●	●	●	●	●	●	●	●	-40°C	+60°C
High Bay/ Low Bay	AR Series		●		●		●			●	●	●	●	●	●	●	●		●	●	●	●	●	●	●	●	●	●	●	●	●	●	●	●	●	-40°C	+55°C
	XR Series		●		●		●			●	●	●	●	●	●	●	●		●	●	●	●	●	●	●	●	●	●	●	●	●	●	●	●	●	-50°C	+75°C
	MR Series		●		●		●			●	●	●	●	●	●	●	●		●	●	●	●	●	●	●	●	●	●	●	●	●	●	●	●	●	-40°C	+55°C
	JR Series		●		●		●			●	●	●	●	●	●	●	●		●	●	●	●	●	●	●	●	●	●	●	●	●	●	●	●	●	-40°C	+60°C
Yoke Mount	AR Series		●		●		●			●	●	●	●	●	●	●	●		●	●	●	●	●	●	●	●	●	●	●	●	●	●	●	●	●	-40°C	+55°C
	XR Series		●		●		●			●	●	●	●	●	●	●	●		●	●	●	●	●	●	●	●	●	●	●	●	●	●	●	●	●	-50°C	+75°C
	MR Series		●		●		●			●	●	●	●	●	●	●	●		●	●	●	●	●	●	●	●	●	●	●	●	●	●	●	●	●	-40°C	+55°C
	JR Series		●		●		●			●	●	●	●	●	●	●	●		●	●	●	●	●	●	●	●	●	●	●	●	●	●	●	●	●	-40°C	+60°C
Linear	GS Series AC		●		●		●			●	●	●	●	●	●	●	●		●	●	●	●	●	●	●	●	●	●	●	●	●	●	●	●	●	-40°C	+65°C
	GS Series DC		●		●		●			●	●	●	●	●	●	●	●		●	●	●	●	●	●	●	●	●	●	●	●	●	●	●	●	●	-40°C	+60°C
	NL Series		●		●		●			●	●	●	●	●	●	●	●		●	●	●	●	●	●	●	●	●	●	●	●	●	●	●	●	●	-40°C	+53°C
	BL Series		●		●		●			●	●	●	●	●	●	●	●		●	●	●	●	●	●	●	●	●	●	●	●	●	●	●	●	●	-50°C	+65°C
Dark Sky Certified	AR Series		●		●		●			●	●	●	●	●	●	●	●		●	●	●	●	●	●	●	●	●	●	●	●	●	●	●	●	●	-40°C	+55°C
	XR Series		●		●		●			●	●	●	●	●	●	●	●		●	●	●	●	●	●	●	●	●	●	●	●	●	●	●	●	●	-50°C	+75°C
	MR Series		●		●		●			●	●	●	●	●	●	●	●		●	●	●	●	●	●	●	●	●	●	●	●	●	●	●	●	●	-40°C	+55°C
	GS Series AC		●		●		●			●	●	●	●	●	●	●	●		●	●	●	●	●	●	●	●	●	●	●	●	●	●	●	●	●	-40°C	+65°C
Specialty	GS Series DC		●		●		●			●	●	●	●	●	●	●	●		●	●	●	●	●	●	●	●	●	●	●	●	●	●	●	●	●	-40°C	+60°C
	EXC Series	●	●	●		●	●	●			●			●		●			●	●	●	●	●	●	●	●		●			●			-50°C	+58°C		
	CANLED Series		●								●			●			●			●	●	●	●	●	●	●	●	●		●					-40°C	+55°C	
	XCANLED Series		●								●			●			●			●	●	●	●	●	●	●	●	●		●					-40°C	+55°C	
Temporary	LS Series		●		●	●	●		●				●			●			●	●	●	●	●	●	●	●					●	●	●	-20°C	+60°C		
	JR Series		●		●	●	●			●	●	●	●			●	●		●	●	●	●	●	●	●	●	●	●	●	●	●	●	●	●	●	-40°C	+60°C
	ZLM Series									●				●	●	●	●			●	●	●	●	●		●				●				●	-40°C	+55°C	

Notes:  
\*Custom optics are available upon request  
\*\*IP68 models are rated for General Location use only

# PRODUCTS





# JR SERIES



## 2,000 – 5,000 lumen compact luminaire

### Features

- Designed for marine, harsh, and hazardous location use
- Compact and multi-functional luminaire for challenging applications
- Thermal separation of LED and power supply allows max ambient temperatures of up to +60°C
- Marine grade copper-free aluminum housing with multi-layer powder coated finish
- Approved for through-wiring of multiple luminaires on a single circuit
- Provided with standard glass or special order polycarbonate\* lens
- Available in two lumen output models with several beam profiles
- 3 x 3/4" NPT Entrees & 0-10V dimmable

### Technical Specs

**Voltage:** AC: 120-277 VAC | HV: 347 VAC\*\* (50/60 Hz)

**Ingress Protection:** IP66 | IP67 | IP68\*\*

**Temp Range:** -40°C to +60°C

**Certification:** UL 844; UL 1598; UL 1598A; UL 8750;  
CSA C22.2 No. 250.0-08, CSA C22.2 No. 250.13-17;  
Class I, Division 2 Groups ABCD, T3;  
Class II, Division 1 & Division 2 Groups FG, T3  
Class III, Division 1 & Division 2  
Class 1, Zone 2, Group IIC | Zone 22  
IEC 60529, C22.2

\* The polycarbonate lens is not rated for Class II Division 1

\*\* The 347 VAC & fully encapsulated (IP68) versions are rated for General Location use only



### Fixture

2.58 kg | 5.68 lbs

(mounting bracket excluded)

7.0 in x 8.0 in x 4.4 in

c/w Slip Fitter Yoke Mount (JR-SFY)

### Mounting Options (ordered separately)



Surface (JR-SM)



Wall 2 (JR-WM2)



Pole (JR-PM)



Yoke (JR-YM)



Hook (JR-HK)



Conduit (JR-CM)



High Vibration (JR-YK)



# MR SERIES



## 3,000 – 6,000 lumen versatile luminaire

### Features

- Designed for marine, harsh, and hazardous location use
- Optimized thermal management for all electronics
- Wide range of optical distribution patterns for superior lighting quality
- Approved for through-wiring of multiple units on a single circuit
- Built-in junction area for simplified termination
- 8 mounting options for deployment flexibility
- Field serviceable light engines, power supply and housing elements

### Technical Specs

**Voltage:** AC: 120-277 VAC (50/60 Hz) | HV: 347 VAC (50/60 Hz)

**Ingress Protection:** IP66 | IP67 | IP68\*

**Temp Range:** -40°C to +55°C

**Certification:** UL 844, UL 1598 & UL 1598A & UL 8750;  
CSA C22.2 No. 137, CSA C22.2 No. 250.0, CSA C22.2 No. 250.13;  
Class I, Division 2, Groups ABCD, T4;  
Class II, Division 2, Groups FG, T4A;  
Class I, Zone 2, Groups IIC;  
Zone 22

\* The fully encapsulated (IP68) versions are rated for General Location use only



\*Rated for General Location use only.



### Fixture

4.6 kg | 10.4 lbs

(mounting bracket excluded)

11.5 in x 14.5 in x 2.5 in

c/w Slip Fitter Yoke Mount (MR-SFY)

### Mounting Options (ordered separately)



Surface (MR-SM)



Suspension (MR-SM)



Pole (MR-PM)



Wall (MR-WM2)



Yoke (MR-YM)



Hook (MR-HK)



Conduit (MR-CM)





# XR SERIES



## 8,000 – 20,000 lumen multi-functional luminaire

### Features

- Designed for marine, harsh, and hazardous location use
- Thermal separation of LED and power supply allows max ambient temperatures of up to +75°C
- Wide range of optical distribution patterns for superior lighting quality
- Approved for through-wiring of multiple units on a single circuit
- Built-in junction area for simplified termination
- 8 mounting options for deployment flexibility
- Field serviceable light engines, power supply and housing elements



#### Fixture

8.1 kg | 17.8 lbs  
(mounting bracket excluded)  
18.74 in x 14.88 in x 3.78 in

c/w Slip Fitter Yoke Mount (XR-SFY)

### Technical Specs

**Voltage:** AC: 120-277 VAC (50/60 Hz) | HV: 347-480 VAC (50/60 Hz)

**Ingress Protection:** IP66 | IP68\*

**Temp Range:** -50°C to +75°C

**Certification:** UL 844; UL 1598 & UL 1598A; UL 8750;

CSA C22.2 No. 250.0-08, CSA C22.2 No. 250.13-17, CSA C22.2 No. 137-18;

Class I, Division 2 Groups ABCD / Class I, Zone 2, Groups IIC;

Class II Division 2 Groups FG / Class I, Zone 22, Groups IIIB;

Class III

\* The fully encapsulated (IP68) versions are rated for General Location use only



### Mounting Options (ordered separately)



Surface (XR-SM)

Pole (XR-PM)

Wall (XR-WM2)

Yoke (XR-YM)

Hook (XR-HK)

Conduit (XR-CM)

High Vibration (XR-YK)

www.nemalux.com



# AR SERIES



## 10,000 – 50,000 lumen high output floodlight

### Features

- Designed for marine, harsh and hazardous location use
- Housing geometry and specialty powder coat prevents debris buildup and staining
- Wide range of optical distribution patterns for superior lighting quality
- Approved for through-wiring of multiple units on a single circuit
- Built-in junction area for simplified termination
- 8 mounting options for deployment flexibility
- Field serviceable light engines, power supply and housing elements



#### Fixture

16.4 kg | 36.0 lbs  
(mounting bracket excluded)  
24.0 in x 20.0 in x 4.3 in

c/w Slip Fitter Yoke Mount (AR-SFY)

### Technical Specs

**Voltage:** AC: 120-277 VAC | HV: 347-480 VAC (50/60 Hz)

**Ingress Protection:** IP66 | IP67

**Temp Range:** -40°C to +55°C

**Certification:** UL 844; UL 1598 & UL 1598A; UL 8750;

CSA 22.2 No. 137, CSA 22.2 No. 250.0, CSA 22.2 No. 250.13;

Class I, Division 2, Groups ABCD; | Class II, Division 2, Groups FG;

Class I, Zone 2, Groups IIC; | Class I, Zone 22, Groups IIIB;

Class III



### Mounting Options (ordered separately)



Surface (AR-SM)

Pole (AR-PM)

Wall (AR-WM2)

Yoke (AR-YM)

Hook (AR-HK)

Conduit (AR-CM)

High Vibration (AR-YK)



# GS SERIES



### Fixture

GS-1: 0.8 kg | 1.8 lbs  
- Length: 15.5 in

GS-2: 1.2 kg | 2.6 lbs  
- Length: 26.5 in

GS-3: 1.8 kg | 3.9 lbs  
- Length: 37.5 in

GS-4: 2.4 kg | 5.3 lbs  
- Length: 48.5 in

### Mounting Options



A - Adjustable Mounting Bracket



B - Carriage Bolt / Surface Mount

## 500 – 5,000 lumen linear low-profile luminaire

### Features

- Designed for marine, harsh, and hazardous location use
- 12 or 24 Volt DC as well as 120 Volt AC direct input circuit board / light engine
- Light weight and low-profile housing allow for deployment in complex areas
- Adjustable mounting brackets allows for 360° rotation
- Sealed housing provided with 3ft cable and cable gland
- Vented enclosure to prevent stress on electronics and gaskets

### Technical Specs

**Voltage:** DC: 12: 11-16 VDC | 24: 22-28 VDC | 24H: 22-28 VDC

AC: 120 VAC ± 10% (60 Hz)

**Ingress Protection:** IP66 | IP67 | IP68\*

**Temp Range:** -40°C to +65°C

**Certification:** UL 844, UL 1598, UL 1598A, UL 2108;  
CSA 22.2 No. 137, CSA 22.2 No. 250.0;  
Class I, Division 2, Groups ABCD, T4;  
Class II, Division 2, Groups FG, T6;  
Class III;  
Class I, Zone 2, Group IIC; Zone 22

\* The fully encapsulated (IP68) versions are rated for General Location use only



GS-DC



GS-AC



# BL SERIES



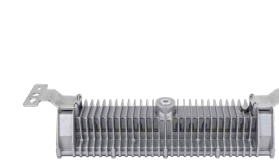
c/w Adjustable Yoke Mount (BL-YM)

### Fixture

2.9 kg | 6.4 lbs  
(mounting bracket excluded)

18.43 in x 5.65 in x 3.93 in

### Mounting Options (ordered separately)



Surface (BL-SM)



Hook (BL-HK)



Conduit (BL-CM)



Wall (BL-WM)



Tube Clamp (BL-TC)



Strap Mounting

## 2,000 – 4,000 lumen 18 inch linear luminaire

### Features

- Designed for marine, harsh, and hazardous location use
- Lightweight replacement for conventional vapor tight lights
- Copper free aluminum housing with polycarbonate or glass lens
- Approved for through-wiring of multiple units on a single circuit
- Built-in junction area for simplified termination
- Field serviceable light engines, power supply and housing elements

### Technical Specs

**Voltage:** AC: 120-277 VAC (50/60 Hz) | HV: 347 VAC\* (50/60 Hz)

**Ingress Protection:** IP66 | IP68\*

**Temp Range:** -50°C to +65°C

**Certification:** UL 844; UL 1598 & UL 1598A; UL 8750;  
CSA 22.2 No. 250.0, CSA 22.2 No. 250.13, CSA 22.2 No. 137;  
Class I, Division 2, Groups ABCD, T4A;  
Class II, Division 2, Groups FG, T6;  
Class III;

\* The fully encapsulated (IP68) versions are rated for General Location use only







## NL SERIES



4,000 – 14,000 lumen linear high output luminaire

### Features

- Designed for marine, harsh, and hazardous location use
- High intensity linear LED replacement for conventional vapor tight lights
- Copper free, extruded aluminum housing with polycarbonate lens
- Approved for through-wiring of multiple units on a single circuit
- Built-in junction area for simplified termination
- Angle adjustable mounting bracket allows for 360° rotation
- Field serviceable light engines, power supply and housing elements

### Fixture

NL-2: 5.3 kg | 12.0 lbs  
- Length: 27.3 in

NL-4: 8.6 kg | 19.0 lbs  
- Length: 50.8 in

### Technical Specs

**Voltage:** AC: 120-277 VAC (50/60 Hz) | HV: 347-480 VAC (50/60 Hz)

**Ingress Protection:** IP66

**Temp Range:** -40°C to +55°C

**Certification:** UL 844; UL 1598 & UL 1598A; UL 8750;

CSA 22.2 No. 137, CSA 22.2 No. 250.0, CSA 22.2 No. 250.13;

Class I, Division 2, Groups ABCD;

Class II, Division 2, Groups FG;

Class III;

Class I, Zone 2, Groups IIC; Class I, Zone 22, Groups IIIB

### Mounting Options (ordered separately)



Surface / Ceiling & Suspended Mount



Angle Adjustable Mount & Swivel Bracket



## EXC SERIES



1,200 lumen explosion proof luminaire for confined space applications

### Features

- Explosion-proof luminaire designed for confined space and low clearance applications
- Tested to withstand more than 2,500 psi internal pressure
- Built-in junction box with three 3/4" NPT entries on three sides
- Copper free, marine grade aluminum housing with glass lens
- Thermally managed for maximum longevity
- No arcing, sparking or hazardous temperature components

### Fixture

4.4 kg | 9.8 lbs  
(mounting bracket excluded)

11.5 in x 6.5 in x 3.76 in

### Technical Specs

**Voltage:** AC: 120-277 VAC (50/60 Hz) | DC: 22-28 VDC

**Ingress Protection:** IP66

**Temp Range:** -50°C to +58°C

**Certification:** UL 844; UL 1598; UL 8750;

CSA 22.2 No. 250.0, CSA 22.2 No. 250.13, CSA 22.2 No. 137;

Class I, Division 1, Groups CD T5;

Class II, Division 1, Groups EFG T4A;

Class III, Division 1;

Class I, Zone 1, Group IIB; Class II, Zone 20, Group IIIC



### Mounting Options (ordered separately)



Surface - built in



Yoke (EXC-YM) - ordered separately



## SPECIALTY

### XCANLED Series

1,996 - 2,334 lumen fixture



12-24 VDC  
4.3 kg | 9.5 lbs  
Ø7.0" x 5.0"  
-40°C to +55°C  
IP66



### CANLED Series

469 - 587 lumen fixture



12-24 VDC  
1.04 kg | 2.3 lbs  
Ø3.47" x 5.29"  
-40°C to +55°C  
IP66



## TEMPORARY

### ZLM Series

22,000 - 28,000 lumen fixture



120-277 VAC  
10.0 kg | 22.0 lbs  
15.5" x 6.8" x 7.1"  
-40°C to +45°C  
IP66



General Location Only

### LS Series

1,550 lumens per module



120 VAC  
1.2 kg | 2.6 lbs per module  
9.7" x 3.3" per module  
-50°C to +70°C  
IP66 / IP67

Light Stringer can have up to 30 LED modules per string



## SUPPORT STRUCTURES

### Top Hat Retrofit Adapter

Upgrade existing Crouse Hinds mounting hoods with NemaLux luminaires



Quick & easy installation  
Re-use existing wiring  
Reduce maintenance



### Swivelpole

Pre-wired & pre-assembled  
c/w the MR Series  
c/w the XR Series



IP66 / IP67  
GN & HZ



### ARTSU

Articulating strut pole assembly



IP66 / IP67  
GN & HZ



### Solar GS

Pre-assembled system



IP66 / IP67  
GN & HZ



### Bullrail GS

c/w GS2 in protective case



IP66 / IP67  
GN & HZ



### GS Shield

Back light prevention shield  
c/w the GS Series



IP66 / IP67  
GN & HZ







## GET IN TOUCH

Safe & optimized lighting  
for industrial projects.



Digital Copy



Toll Free: 1-877-NEMALUX / 1-877-636-2589

P: 1.403.242.7475

F: 1.403.243.6190

E: [info@nemalux.com](mailto:info@nemalux.com)

W: [www.nemalux.com](http://www.nemalux.com)



Copyright© 2025 Nemalux, Rev. C2

Due to constant product development, details in this brochure are subject to change at any time. Contact us for the latest information.