

XR Series Installation Manual

Zone 21 Certification



LC21CA19098-1X



APPLICATION

The XR luminaire is an industrial-grade product suitable for harsh and hazardous locations. Installation areas include indoors, outdoors, and wet locations. Frequent exposure to moisture, dirt, corrosion, vibration, and rough usage is common for this product family. The XR-Z21 is Zone 21 certified for Canada. Zone 21 areas are high-risk environments for explosive powder or dust. Models, including "-HZ-", are approved for use in hazardous location areas.

Certified to: Conforms to: CSA C22.2 NO. 60079-0, CSA-C22.2 NO. 60079-31, CSA-C22.2 No250.0 and CSA-C22.2 No. 250.13

Hazardous Location Certification: Ex tb IIIC Db T92°C -50°C <Ta< +50°C
Zone 21

Housing: Copper-free die cast aluminium with polycarbonate lens.

Input Voltage: Based on luminaire suffix in table below:
Suffix - AC: 120-277 VAC | Suffix - HV: 347-480 VAC

Electrical Ratings:

LUMINANCE	INPUT VOLTAGE	RATED WATTAGE [Watts]	RATED VOLTAGE [Volts]	FREQUENCY [Hz]
XR8	AC	Flood: 47 Optic: 60	120-277	50/60
	HV	Flood: 49 Optic: 64	347-480	50/60
XR10	AC	Flood: 55 Optic: 75	120-277	50/60
	HV	Flood: 58 Optic: 77	347-480	50/60
XR15	AC	Flood: 84 Optic: 103	120-277	50/60
	HV	Flood: 91 Optic: 107	347-480	50/60
XR20	AC	Flood: 141 Optic: 156	120-277	50/60
	HV	Flood: 148 Optic: 160	347-480	50/60

Connections: 3 x 3/4" NPT Conduit | Black: Line | White: Neutral/Line 2 | Green: Ground
Optional: Violet: 0-10V Dimming (+) | Grey: 0-10V Dimming (-)
 For connections use wire rated to a minimum of 90°C. Class 1 Wiring only.
 All supply field wiring must be rated 300V minimum for luminaires with suffix AC, 600V minimum for luminaires with suffix HV.

Ambient Temperature Range: All models -50°C to +50°C

Ingress Protection: IP66 | Suitable For wet locations.



WARNING / ATTENTION

To avoid the risk of fire, explosion, or electric shock, this product should be installed, inspected, and maintained by a qualified electrician only, in accordance with all applicable electrical codes.

Éviter tout risque d'incendie, d'explosion ou d'électrocution, ce produit doit être installé, inspecté et entretenu par un électricien qualifié uniquement, conformément à tous codes électriques applicables.



WARNING / ATTENTION

To reduce the risk of electric shock, disconnect the luminaire from the supply circuit before opening for installation and servicing. Keep tightly closed when in operation.

Pour réduire le risque de choc électrique, débranchez le luminaire du circuit d'alimentation avant l'ouverture pour l'installation et entretien. Gardez hermétiquement fermé pendant le fonctionnement.



WARNING Potential Electrostatic Charging Hazard ATTENTION Risque potentiel de charge électrostatique

Avoid electrostatic discharge:

- Clean exterior lens surface with damp cloth only
- Éviter les décharges électrostatiques: nettoyer la surface extérieure de la lentille uniquement avec un chiffon humide

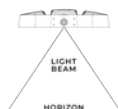
XR-SM – SURFACE/CEILING MOUNT INSTALLATION (Ordered Separately)

If using a different mounting accessory, refer to the corresponding page.

This XR-SM kit is intended for use with UL listed XR luminaire as marked on the luminaire nameplate.

Accessory Package Contents

XR-SM	QTY	PART NAME
	2	SURFACE/SUSPENSION MOUNT BRACKET
	4	M6 X 12mm HEX HEAD CAP SCREW
	4	M6 FLAT WASHER



WARNING / ATTENTION

The XR head must not face upwards any degree beyond the horizontal position for Class II, Division 2, Zone 22 and Class III hazardous location installations.

Le luminaire XR ne doit pas être orienté vers le haut à un degré quelconque au-delà de la position horizontale pour les installations en zones dangereuses de classe II, division 2, zone 22 et classe III.

INSTALLATION STEPS

STEP 1.

Inspect shipping package and contents to ensure no damage has occurred during shipping.

STEP 2.

Install surface/suspension mount brackets using the 8x M6 hex cap bracket mounting screws. See the diagram for the orientation of brackets. Torque M6 bolts to 5 Nm (45 in-lbs).

STEP 3.

A) For a surface mounting configuration:

Mount the luminaire in the desired locations using 4x 1/4-20 OR 4x M6 fasteners and washers (not provided). One mounting hole on each bracket is keyed to allow partial pre-installation of two fasteners for ease of installation.

B) For ceiling mounting configurations:

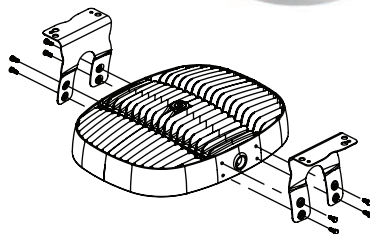
Connect 4x anchors to the 12.7mm (0.5") holes. Suspension hardware (not provided) must be rated for a minimum of 110 lbs.

STEP 4.

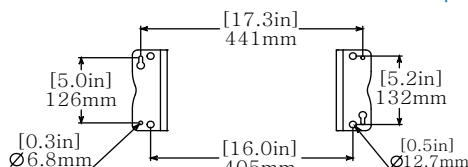
Open the XR wiring cover and allow the cover to hang via the retention strap.

Note:

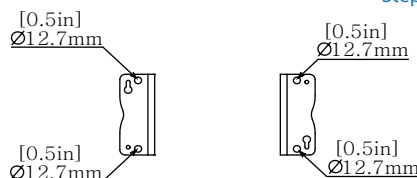
Screws are captive and will remain attached to the lens for ease of reinstall and to prevent loss of fasteners.



Step 2



Step 3A



Step 3B

XR-SM – SURFACE/CEILING MOUNT INSTALLATION (Ordered Separately)

INSTALLATION STEPS CONT.

STEP 5.

Make wiring connections from branch circuit conductors to factory-provided lead wires using one of the 3/4" NPT threaded entries. Follow the wiring method requirements of the Canadian Electrical Code or National Electrical Code for the specific location of the installation. If installing a hazardous location model (XRXX-XXX-XXX-XX-HZ-XX) in a hazardous area, follow the hazardous location wiring method requirements of the Canadian Electrical Code or National Electrical Code.

For 0-10V Analog Dimming Control:

Ensure dimming control is certified and suitable for the classification of the area of installation. Connect Violet (Purple) (+) and Gray (-) driver lead wires to 0-10VDC control wiring.

0-10V Controller must sink current from LED driver - LED drivers will source a combined maximum of 200uA for control needs.

NOTE:

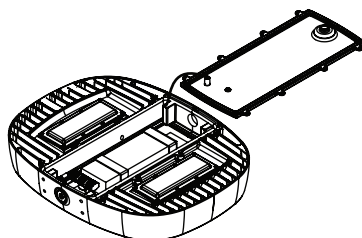
To aid in assembly and protect against ingress, a petrolatum or soap-thickened mineral oil-based thread lubricant/sealant is necessary

If the fixture has unused conduit openings, plug them to maintain the enclosure's integrity.

STEP 6.

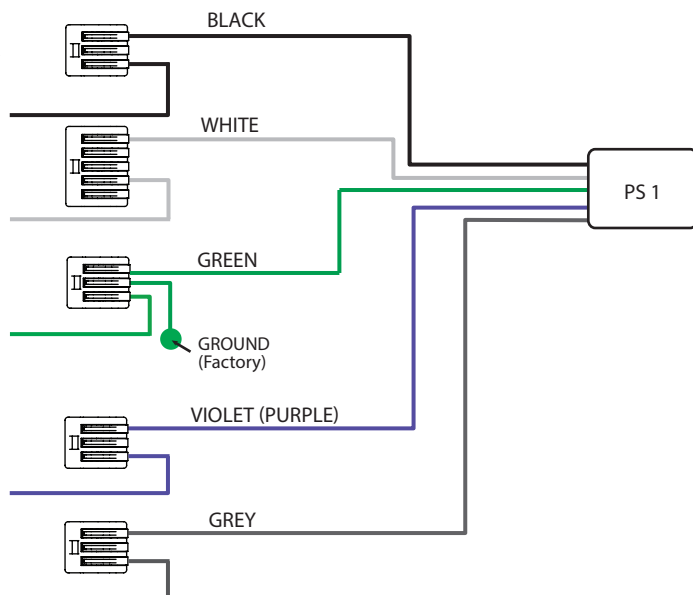
Close XR cover. Ensure the retention cable is not pinched between the XR head and the XR cover. Tighten cover bolts to 1.7 N-m (15 in-lbs).

Step 5



WIRING DIAGRAM

BLACK - LINE
 WHITE - NEUTRAL/LINE 2
 GREEN - GROUND
 VIOLET(PURPLE) - DIM (+)
 GREY - DIM (-)

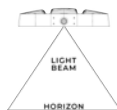


*Any additional wiring not shown has been capped by the factory and is not to be used.

XR-PM – POLE MOUNT INSTALLATION (Ordered Separately)

If using a different mounting accessory, refer to the corresponding page.

This XR-PM kit is intended for use with UL listed XR luminaire as marked on the luminaire nameplate.



WARNING / ATTENTION

The XR head must not face upwards any degree beyond the horizontal position for Class II, Division 2, Zone 22 and Class III hazardous location installations.

Le luminaire XR ne doit pas être orienté vers le haut à un degré quelconque au-delà de la position horizontale pour les installations en zones dangereuses de classe II, division 2, zone 22 et classe III.

Accessory Package Contents

XR-PM	QTY	PART NAME
	1	POLE MOUNT
	1	POLE MOUNT GASKET
	4	M6 X 25mm HEX HEAD CAP SCREW
	4	M6 FLAT WASHER
	1	M6 X 16mm HEX HEAD CAP SCREW
	1	3/4 NPT THREADED SMOOTH BORE BUSHING



INSTALLATION STEPS

STEP 1.

Inspect shipping package and contents to ensure no damage has occurred during shipping.

STEP 2.

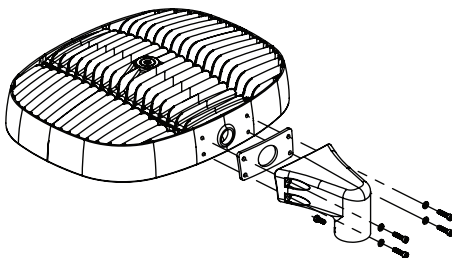
Install the provided plastic 3/4" bushing into the side 3/4" NPT entry.

STEP 3.

Install pole mount and gasket with adhesive side applied to mount using included M6 bolts and washers. Torque to 5 Nm (45 in-lbs).

STEP 4.

Thread luminaire assembly onto a 1.5" NPT pole.



Step 3

NOTE:

To aid in assembly and protect against ingress, a petrolatum or soap-thickened mineral oil-based thread lubricant/sealant is necessary.

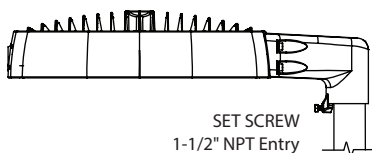
If the fixture has unused conduit openings, plug them to maintain the enclosure's integrity.

STEP 5.

Insert and tension M6 set screw to the pole to lock rotation.

STEP 6.

Continue installation with STEP 4 on PAGE 3.



Step 5

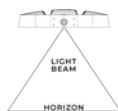
XR-WM – WALL MOUNT INSTALLATION (Ordered Separately)

If using a different mounting accessory, refer to the corresponding page.

This XR-WM kit is intended for use with UL listed XR luminaire as marked on the luminaire nameplate.

Accessory Package Contents

XR-WM	QTY	PART NAME
	1	WALL MOUNT
	1	WALL MOUNT PLATE
	1	WALL MOUNT PLATE SIDE GASKET
	1	WALL MOUNT GASKET
	4	6 x 25mm SOCKET HEAD CAP SCREW
	4	M4x 10mm FLAT HEAD SOCKET CAP SCREW
	4	M6 FLAT WASHER
	3	3/4 NPT ENTRY PLUG
	1	3/4 NPT THREADED SMOOTH BORE BUSHING



⚠ WARNING / ATTENTION

The XR head must not face upwards any degree beyond the horizontal position for Class II, Division 2, Zone 22 and Class III hazardous location installations.

Le luminaire XR ne doit pas être orienté vers le haut à un degré quelconque au-delà de la position horizontale pour les installations en zones dangereuses de classe II, division 2, zone 22 et classe III.



INSTALLATION STEPS

STEP 1.

Inspect shipping package and contents to ensure no damage has occurred during shipping.

STEP 2.

Install the provided 3/4" NPT conduit plugs in the desired locations on the wall mount. To maintain the ingress rating, all NPT entries not used for wiring connections must be plugged. Torque to 10 Nm (88 in-lbs).

NOTE:

To aid in assembly and protect against ingress, a petrolatum or soap-thickened mineral oil-based thread lubricant/sealant is necessary.

If the fixture has unused conduit openings, plug them to maintain the enclosure's integrity.

STEP 3.

Install the provided 3/4" NPT plastic bushing onto the side NPT entry on the XR head. Rotate so that the flats are parallel to the lens surface to avoid interference with the mounting hardware.

STEP 4.

Install the wall mount main body with the included M6 bolts, washers, and adhesive-backed gasket. Apply the gasket to the mount with the adhesive-backed side. Torque to 5 Nm (45 in-lbs).

STEP 5.

Install back cover plate with 4x M4 Flat head screws and adhesive backed gasket. Apply the gasket with an adhesive side to mount the main body. Torque to 1.7 N-m (15 in-lbs).

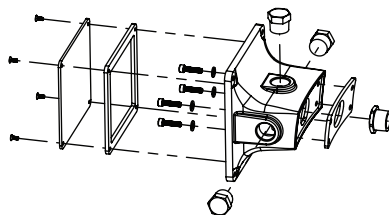
STEP 6.

Mount luminaire assembly to the desired location using 4x 1/4-20 OR M6 screws or bolts (not provided).

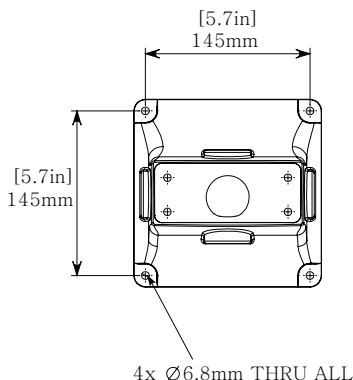
STEP 7.

Continue installation with STEP 4 on PAGE 3.

Steps 2 through 5



Step 6



XR-WM2 – WALL MOUNT 2 INSTALLATION (Ordered Separately)

If using a different mounting accessory, refer to the corresponding page.

This XR-WM2 kit is intended for use with UL listed XR luminaire as marked on the luminaire nameplate.

Accessory Package Contents

XR-WM2	QTY	PART NAME
	1	WALL MOUNT
	1	WALL MOUNT LID
	1	WALL MOUNT GASKET
	4	6 x 25mm SOCKET HEAD CAP SCREW
	2	M6 x 20mm SOCKET HEAD CAP SCREW
	4	M6 FLAT WASHER
	3	3/4 NPT HEX CAP PLUG
	1	3/4 NPT THREADED SMOOTH BORE BUSHING
	1	WIRE EXTENSION KIT



INSTALLATION STEPS

STEP 1.

Inspect shipping package and contents to ensure no damage has occurred during shipping.

STEP 2.

Install the provided 3/4" NPT conduit plugs in the desired locations on the wall mount. To maintain the ingress rating, all NPT entries not used for wiring connections must be plugged. Torque to 10 Nm (88 in-lbs).

NOTE:

To aid in assembly and protect against ingress, a petrolatum or soap-thickened mineral oil-based thread lubricant/sealant is necessary.

If the fixture has unused conduit openings, plug them to maintain the enclosure's integrity.

STEP 3.

Open XR luminaire by removing cover bolts. Note screws are captive for easy reinstallation. Install provided 3/4" smooth bore bushing in side NPT entry and extend supply wires through bushing with provided wire extensions. Close XR & torque fasteners to 1.7 N-m (15 in-lbs).

STEP 4.

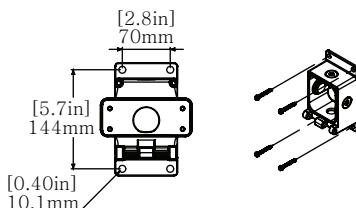
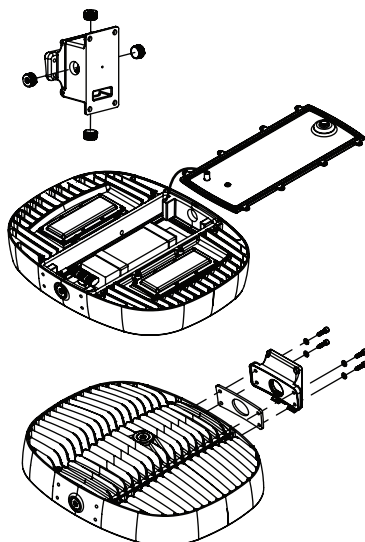
Attach the gasket to the WM2 cover face and then fasten it to the XR body with the provided M6 screws and washers. Torque to 5N-m (45in-lbs).

STEP 5.

Mount the WM2 base in the desired location through the 4 10mm (3/8") mounting holes using appropriate fasteners and washers for the supporting material (fasteners not provided).

STEP 6.

Route branch conductors to WM2 base. Follow the wiring method requirements of the Canadian Electrical Code or National Electrical Code for the specific location of the installation. If installing a hazardous location model (XRXX-XXX-XXX-XX-HZ-XX) in a hazardous area, follow the hazardous location wiring method requirements of the Canadian Electrical Code or National Electrical Code.



XR-WM2 – WALL MOUNT 2 INSTALLATION CONT. (Ordered Separately)

INSTALLATION STEPS CONT.

STEP 7.

Hang the XR luminaire/WM2 cover over hinge pins in preparation for wiring.

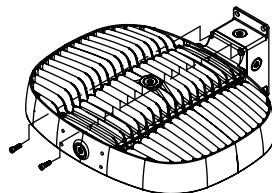
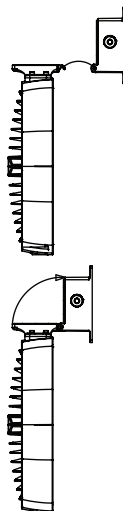
STEP 8.

Make wiring connections from luminaire wires to branch circuit conductors, ensuring bonding connection with WM2 base (wiring diagram on pg 4). Follow the wiring method requirements of the Canadian Electrical Code or National Electrical Code for the specific location of the installation. If installing a hazardous location model (XRXX-XXX-XXX-XX-HZ-XX) in a hazardous location, follow the hazardous location wiring method requirements of the Canadian Electrical Code or National Electrical Code. For 0-10V analog dimming control, ensure dimming control is certified and suitable for the classification of the area of installation. Connect Violet (Purple) (+) and Gray (-) driver lead wires to 0-10VDC control wiring. LED drivers will source a combined maximum of 200 uA for control needs.

0-10V Controller must sink current from LED driver - LED drivers will source a combined maximum of 200uA for control needs.

STEP 9.

Swing the XR/WM2 cover upward, closing the junction box. Care is required to ensure no wires are pinched between the lid and body. Secure the lid to the body with two M6 fasteners provided.



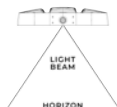
XR-YK – HIGH VIBRATION YOKE INSTALLATION (Ordered Separately)

If using a different mounting accessory, refer to the corresponding page.

This XR-YK kit is intended for use with UL listed XR luminaire as marked on the luminaire nameplate.

Accessory Package Contents

XR-YK	QTY	PART NAME
	1	XR HIGH VIBRATION YOKE
	2	CHEEK PLATE
	8	M6 x 1 x 25mm SOCKET FLAT HEAD CAP
	4	SCREW
	4	M6 FLAT WASHER



WARNING/ ATTENTION

The XR head must not face upwards any degree beyond the horizontal position for Class II, Division 2, Zone 22 and Class III hazardous location installations.

Le luminaire XR ne doit pas être orienté vers le haut à un degré quelconque au-delà de la position horizontale pour les installations en zones dangereuses de classe II, division 2, zone 22 et classe III.



INSTALLATION STEPS

STEP 1.

Inspect shipping package and contents to ensure no damage has occurred during shipping.

STEP 2.

Mount the XR high-vibration yoke to the mounting surface using a minimum of 4x ¼-20 or M6 fasteners (not provided).

STEP 3.

Make wiring connections from branch circuit conductors to factory-provided lead wires using one of the 3/4" NPT threaded entries. Follow the wiring method requirements of the Canadian Electrical Code or National Electrical Code for the specific location of the installation. If installing a hazardous location model (XRXX-XXX-XX-HZ-XX) in a hazardous location, follow the hazardous location wiring method requirements of the Canadian Electrical Code or National Electrical Code.

NOTE:

To aid in assembly and protect against ingress, a petrolatum or soap-thickened mineral oil-based thread lubricant/sealant is necessary.

If the fixture has unused conduit openings, plug them to maintain the enclosure's integrity.

STEP 4.

Mount XR cheek plates to sides of XR luminaire using 4x M6 flat head cap screws per side. Thread one cheek plate over the installed wiring during assembly. Torque fasteners to 5 Nm (45 in-lbs).

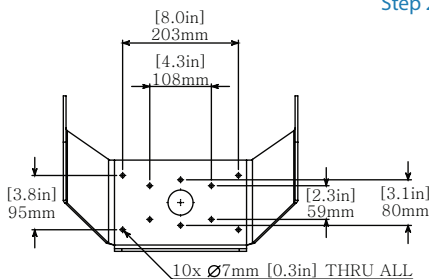
STEP 5.

Thread installed wiring through an opening in the XR high vibration yoke mount and install XR luminaire into the yoke. The raised circular bosses on the XR cheek plates should register inside the large circular holes on the XR high-vibration yoke mount arms. Rotate the luminaire to aim in the desired direction and fasten it in place using 2x M6 socket head cap screws and flat washers per side. Torque fasteners to 5 Nm (45 in-lbs).

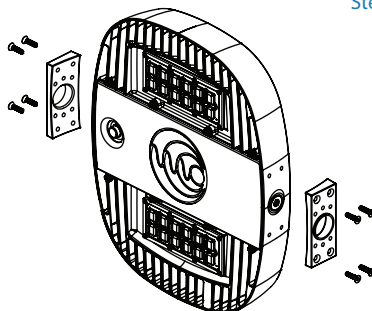
STEP 6.

Continue installation with STEP 4 on PAGE 3.

Step 2



Step 4



XR-YM – YOKE MOUNT INSTALLATION (Ordered Separately)

If using a different mounting accessory, refer to the corresponding page.

This XR-YM kit is intended for use with UL listed XR luminaire as marked on the luminaire nameplate.

Accessory Package Contents

XR-YM	QTY	PART NAME
	1	YOKE MOUNT A
	1	YOKE MOUNT B
	1	CHEEK PLATE
	4	1/4-20 HEX NUT
	4	1/4" FLAT WASHER
	4	1/4-20 x 0.5in CARRIAGE BOLT
	4	M6 x 25mm HEX HEAD CAP SCREW

INSTALLATION STEPS

STEP 1.

Inspect shipping package and contents to ensure no damage has occurred during shipping.

STEP 2.

Make wiring connections from branch circuit conductors to factory-provided lead wires using one of the 3/4" NPT threaded entries. Follow the wiring method requirements of the Canadian Electrical Code or National Electrical Code for the specific location of the installation. If installing a hazardous location model (XRXX-XXX-XXX-XX-HZ-XX) in a hazardous location, follow the hazardous location wiring method requirements of the Canadian Electrical Code or National Electrical Code.

NOTE:

To aid in assembly and protect against ingress, a petrolatum or soap-thickened mineral oil-based thread lubricant/sealant is necessary.

If the fixture has unused conduit openings, plug them to maintain the enclosure's integrity.

STEP 3.

Loosely assemble the yoke mount with carriage bolts on the inside and washers and nuts on the outside.

NOTE:

Depending on which mounting hole is used in the curved slot, the luminaire may be configured for an upward or downward adjustable swing.

STEP 4.

Thread installed wiring through openings in the yoke mount's cheek plate and yoke mount bracket. Mount yoke assembly to luminaire using 4x M6 socket head cap screws and washers (provided). Torque fasteners to 5 Nm (45 in-lbs).

STEP 5.

Mount luminaire assembly to the desired location using 4x 1/4-20 OR M6 screws or bolts (not provided).

STEP 6.

Adjust and aim the luminaire to the desired position. Torque hardware nuts to 9 N-m (80 in-lbs).

STEP 7.

Continue installation with STEP 4 on PAGE 3.



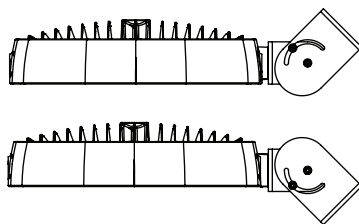
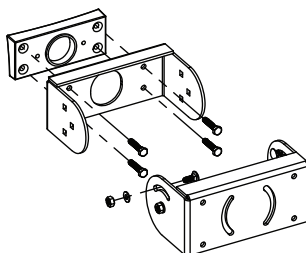
WARNING / ATTENTION

The XR head must not face upwards any degree beyond the horizontal position for Class II, Division 2, Zone 22 and Class III hazardous location installations.

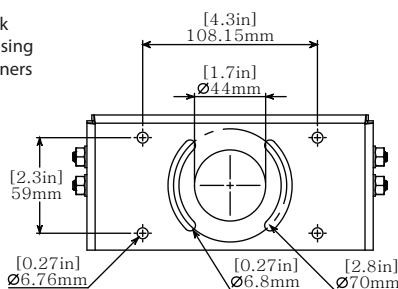
Le luminaire XR ne doit pas être orienté vers le haut à un degré quelconque au-delà de la position horizontale pour les installations en zones dangereuses de classe II, division 2, zone 22 et classe III.



Step 3



Step 5



XR-HK – HOOK PENDANT INSTALLATION (Ordered Separately)

If using a different mounting accessory, refer to the corresponding page.

This XR-HK kit is intended for use with UL listed XR luminaire as marked on the luminaire nameplate.

Accessory Package Contents

XR-HK	QTY	PART NAME
	1	PENDANT HOOK ASSEMBLY
	1	ANTI-ROTATION ASSEMBLY

INSTALLATION STEPS

STEP 1.

Inspect shipping package and contents to ensure no damage has occurred during shipping.

STEP 2.

It is recommended that secondary safety cables be installed by looping appropriate steel cable or chain through the outer band of the unit and fastening a closed loop. Secondary safety hardware must be rated for a minimum of 110 lbs. Secondary safety cables made from stainless steel aircraft cable are available upon request.

STEP 3.

Slide anti-rotation lock onto suspension hook assembly and install the hook assembly into the 3/4" NPT threaded entry. Tighten to hand tight plus 1 to 2 turns. Slide the anti-rotation lock into place and tighten the set screw to lock the unit in place.

NOTE:

To aid in assembly and protect against ingress, a petrolatum or soap-thickened mineral oil-based thread lubricant/sealant is necessary.

If the fixture has unused conduit openings, plug them to maintain the enclosure's integrity.

STEP 4.

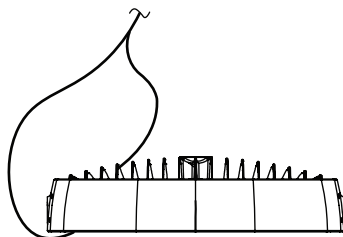
Latch hook onto eyebolt or other fixed mounting loop. The mounting point must be rated for a minimum of 110 lbs.

STEP 5.

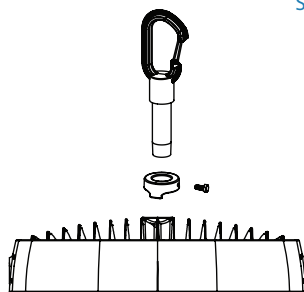
Install the remaining loop of the secondary safety chain or steel cable to a suitable mounting location and fasten it securely.

STEP 6.

Continue installation with STEP 4 on PAGE 3.



Step 2



Step 3

XR-CC – CONDUIT MOUNT INSTALLATION (Ordered Separately)

If using a different mounting accessory, refer to the corresponding page.

This XR-CC kit is intended for use with UL listed XR luminaire as marked on the luminaire nameplate.

Accessory Package Contents

XR-CC	QTY	PART NAME
	1	ANTI-ROTATION BRACKET ASSEMBLY

INSTALLATION STEPS

STEP 1.

Inspect shipping package and contents to ensure no damage has occurred during shipping.

STEP 2.

When using the XR-CC anti-rotation lock, slide it first onto a suitably mounted hanging conduit or luminaire hanger and loosely tightened the set screw. Fixed rigid metal conduit or luminaire hanger must be suitably mounted to prevent rotation, and the system must be rated for 110 lbs.

Install luminaire onto 3/4" NPT threaded nipple. Tighten to hand tight contact plus 1 to 2 turns. When using the XR-CC, loosen the set screw and slide XR-CC into place with flats aligned to those on the luminaire hub and tighten the set screw to lock the unit in place.

NOTE:

To aid in assembly and protect against ingress, a petrolatum or soap-thickened mineral oil-based thread lubricant/sealant is necessary.

If the fixture has unused conduit openings, plug them to maintain the enclosure's integrity.

STEP 3.

If you are utilizing the secondary safety cable, install it by looping the appropriate steel cable or chain through the outer band of the unit and fastening a closed loop. Secondary safety hardware must be rated for a minimum of 110 lbs.

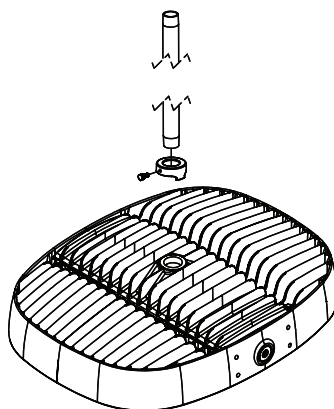
Install the remaining loop of the secondary safety chain or steel cable in a suitable mounting location and fasten it securely. Secondary safety hardware must be rated for 110 lbs.

STEP 4.

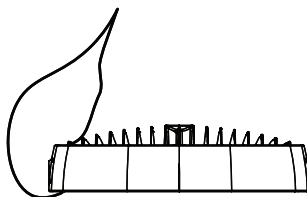
Continue installation with STEP 4 on PAGE 3.



Step 2



Step 3



XR-SFY – SLIP FITTER YOKE MOUNT (Ordered Separately)

If using a different mounting accessory, refer to the corresponding page.



WARNING / ATTENTION

Listing for Class II, Division 2, Zone 22, Class III, Nonrecessed Marine Luminaire and the IP66 or IP66/67 rating are limited to using the mount for mechanical support only and not part of the wiring system.

Luminaires marins de classe II, division 2, zone 22, classe III, non-encasté et la classification IP66 ou IP66 / 67 sont limitées à l'utilisation du support pour un support mécanique uniquement (l'entrée de conduit 1/4" NPT couverte par le support doit être branchée à l'aide des bouchons fournies). Il n'est pas autorisé à être utilisé pour le système de câblage.

This XR-SFY kit is intended for use with UL listed XR luminaire as marked on the luminaire nameplate.

Accessory Package Contents

XR-SFY	QTY	PART NAME
	2	M6 X 16mm FLAT HEX HEAD SOCKET CAP
	1	SCREW
	2	SEALED CAP
	6	M8 X 25mm SOCKET HEAD CAP SCREWS
	4	3/8" HEX BOLTS
	1	M6 X 16mm HEX HEAD CAP SCREW
	1	SLIP FITTER YOKE MOUNT (2x PIECES)

INSTALLATION STEPS

STEP 1.

Inspect shipping package and contents to ensure no damage has occurred during shipping.

STEP 2.

Remove both M6 flat head cap screws using a 4mm hex key and remove the sealed cap. If the required angle is known, adjust the luminaire angle by loosening two M8 socket head cap screws inside the slip fitter pole mount using a 6mm hex key. After aiming torque, the M8 socket head cap screws to 17N-m (13ft-lb).

NOTE:

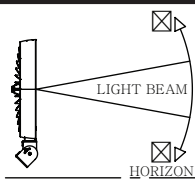
The aiming angle can be adjusted after Step 6.

WARNING:

For Class II, Division 2, Zone 22, and Class III hazardous locations, the XR head must not face upwards by any degree beyond the vertical position.

ATTENTION:

Le luminaire (XR) ne doit pas être orientée vers le haut de quelque degré que ce soit au-delà de la position verticale pour les emplacements dangereux de Classe II, Division 2, Zone 22 et Classe III

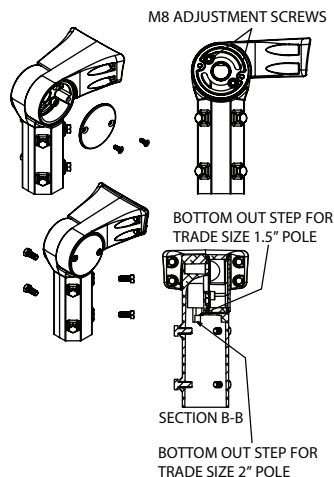
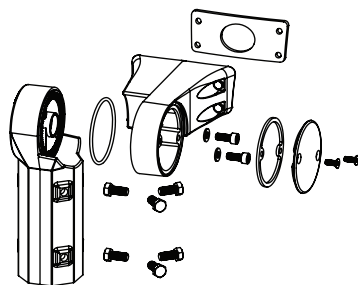


STEP 3.

Install slip fitter pole mount onto the pole. Poles equivalent in size to 1-1/2" or 2" trade size pipe or conduit are to be used. Ensure the slip fitter pole mount is fully seated on top of the pole at the internal stops. Aim and secure the slip fitter pole mount using the six provided 3/8" hex bolts. Torque to 27N-m (20ft-lb).

NOTE:

After installation, the aim can be adjusted up to 180° in either direction by loosening the six hex bolts and tightening again to 27 N-m (20 ft-lb). DO NOT TURN BEYOND 180° as this will induce twist and strain on conductors after wiring.



XR-SFY – SLIP FITTER YOKE MOUNT CONT. (Ordered Separately)

Warning: Listing for Class II, Division 2, Zone 22, Class III, Nonrecessed Marine Luminaire and the IP66 or IP66/67 rating are Limited to using the mount for mechanical support only (¾" NPT Conduit entry covered by mount is to be plugged using provided plugs) and not part of the wiring system.

Luminaire marins de classe II, division 2, zone 22, classe III, non-encasté et la classification IP66 ou IP66/67 sont limitées à l'utilisation du support pour un support mécanique uniquement (l'entrée de conduit ¾" NPT couverte par le support doit être branchée à l'aide des bouchons fournis). Il n'est pas autorisé à être utilisé pour le système de câblage.

STEP 4.

Install a suitable wiring system that complies with the wiring methods permitted in the Canadian Electrical Code or the National Electrical Code for the classification of the hazardous locations area of installation.

STEP 5.

Ensure the wiring system has appropriate strain relief in the luminaire by tying a large enough knot using the supply field wiring in the wiring compartment so that it cannot be pulled through the luminaire's ¾" inch NPT entry.

STEP 6.

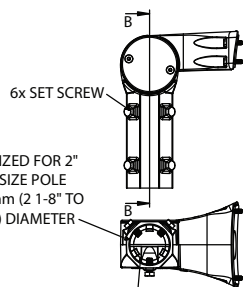
Secure slip fitter pole mount to luminaire with four M6 hex head cap screws provided using a 10mm socket. Torque to 7N-m (62in-lbs).

Step 7.

Close the sealed cap on the slip fitter pole mount. Torque to 7N-m (62in-lbs)

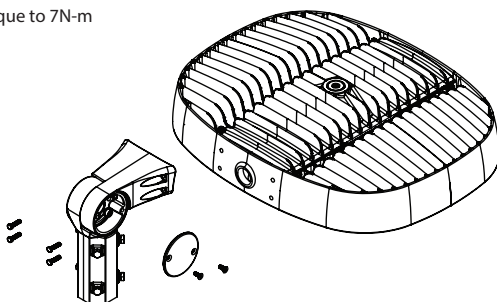
Step 8.

Continue installation with STEP 4 on PAGE 3.



BORE SIZED FOR 2"
TRADE SIZE POLE
53-63mm (2 1-8" TO
2 7-16") DIAMETER

INNER STEP BORE SIZED
FOR 1.5" TRADE SIZE POLE
46mm - 50mm (1 13-16" TO 2")



XR-SP-AC – SURGE SUPPRESSOR KIT (Ordered Separately)

This XR-SP-AC kit is intended for use with UL listed XR luminaire as marked on the luminaire nameplate.

Accessory Package Contents

XR-SP-AC	QTY	PART NAME
	1	BSP3-277-20KA SURGE PROTECTOR
	1	3M VHB TAPE
	1	4" ZIP TIE

INSTALLATION STEPS

STEP 1.

Inspect shipping package and contents to ensure no damage has occurred during shipping.

STEP 2.

Open the XR wiring cover with a 7mm hex socket driver. Allow the lens to hang via the retention strap.

NOTE:

Screws are captive and will remain attached to the lens for ease of reinstall and to prevent loss of fasteners.

STEP 3.

Install the provided double-sided tape along the side of the surge protector and secure it to the XR body near the AC input. Using the provided zip tie, secure the surge protector and driver lead wires together as close to the origin of the driver lead wires as possible.

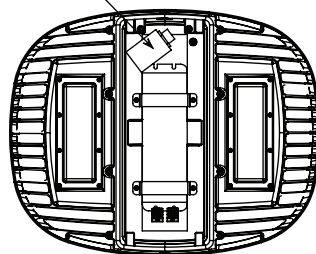
STEP 4.

Wire according to wiring instructions on Pages 12-14. Refer to NEC/CEC codes and follow all applicable local standards.

STEP 5.

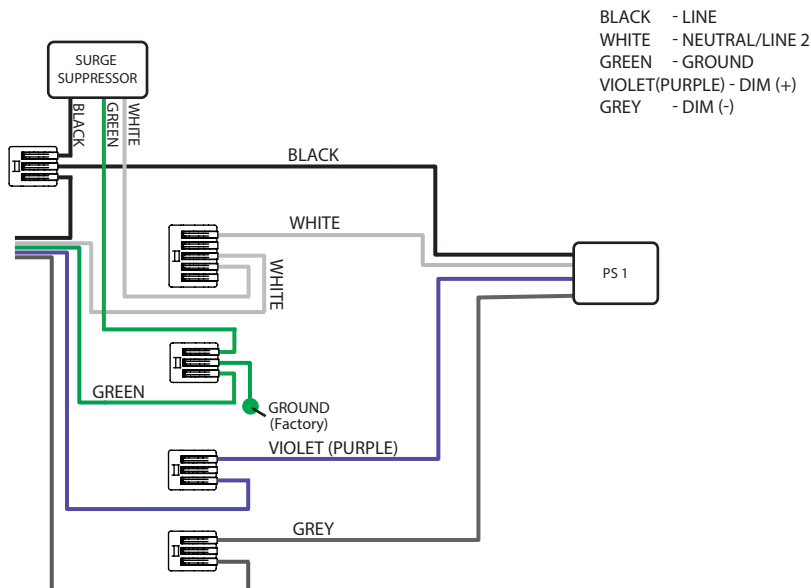
Close the XR wiring cover. Ensure the retention cable is not pinched between the XR head and the XR wiring cover. Tighten lens bolts using a 7mm socket or box wrench to 1.7 N-m (15 in-lbs).

SURGE PROTECTOR LOCATION



WIRING DIAGRAM

(XR-SP-AC)



1. Connect the Black lead from the surge protector to the splice or terminal connected to the input branch circuit conductor and the Black (line) lead from the LED driver.
2. Connect the White lead from the surge protector to the splice or terminal connected to the neutral input branch circuit conductor and the White leads from the LED drivers.
3. Connect the Green wire from the surge protector to the splice or terminal connected to the grounding branch circuit conductor and the green lead from the luminaire case.

XR-SP-HV – SURGE SUPPRESSOR KIT (Ordered Separately)

This XR-SP-HV kit is intended for use with UL Listed XR luminaire as marked on the luminaire nameplate.

Accessory Package Contents

XR-SP-HV	QTY	PART NAME
	1	BSP3-480-20KA SURGE PROTECTOR
	1	3M VHB TAPE
	1	4" ZIP TIE

INSTALLATION STEPS

STEP 1.

Inspect shipping package and contents to ensure no damage has occurred during shipping.

STEP 2.

Open the XR wiring cover with a 7mm hex socket driver. Allow the lens to hang via the retention strap.

NOTE:

Screws are captive and will remain attached to the lens for ease of reinstall and to prevent loss of fasteners.

STEP 3.

Install the provided double-sided tape along the side of the surge protector and secure it to the XR body near the AC input. Using the provided zip tie, secure the surge protector and driver lead wires together as close to the origin of the driver lead wires as possible.

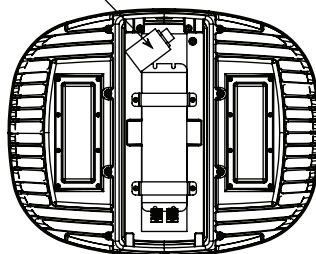
STEP 4.

Wire according to wiring instructions on Pages 14-14. Refer to NEC/CEC codes and follow all applicable local standards.

STEP 5.

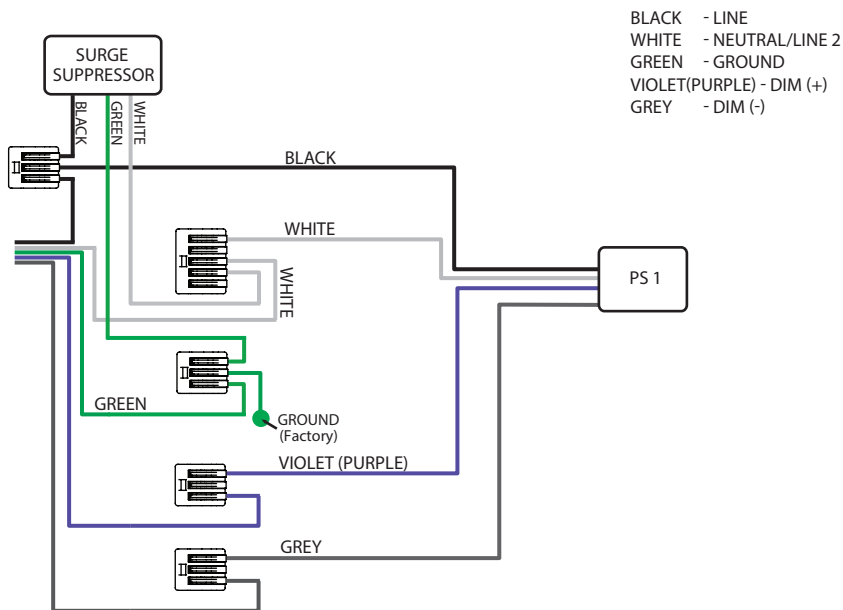
Close the XR wiring cover. Ensure the retention cable is not pinched between the XR head and the XR wiring cover. Tighten the lens bolts using a 7mm socket or box wrench to 1.7 N-m (15 in-lbs).

SURGE PROTECTOR LOCATION



WIRING DIAGRAM

(XR-SP-HV)



1. Connect the Black lead from the surge protector to the splice or terminal connected to the input branch circuit conductor and the Black (line) lead from the LED driver.
2. Connect the White lead from the surge protector to the splice or terminal connected to the neutral input branch circuit conductor and the White leads from the LED drivers.
3. Connect the Green wire from the surge protector to the splice or terminal connected to the grounding branch circuit conductor and the green lead from the luminaire case.

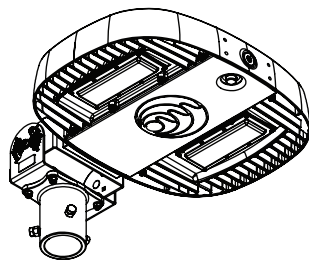
XR-SF – YOKE MOUNT w/ SLIPFITTER INSTALLATION (Ordered Separately)

If using a different mounting accessory, refer to the corresponding page.

This XR-SF kit is intended for use with UL listed XR luminaire as marked on the luminaire nameplate.

Accessory Package Contents

XR-SF	QTY	PART NAME
	1	YOKE MOUNT A
	1	YOKE MOUNT B
	1	CHEEK PLATE
	1	SLIP FITTER / TENON
	4	1/4-20 x 0.625in CARRIAGE BOLT
	4	M6 x 30mm HEX HEAD CAP SCREW
	3	3/8-16 x 0.75in HEX HEAD CAP SCREW
	4	1/4-20 x 1in SOCKET HEAD CAP SCREW
	8	1/4-20 HEX NUT
	3	3/8-16 HEX NUT
	12	1/4in FLAT WASHER



INSTALLATION STEPS

STEP 1.

Inspect the shipping package and its contents to ensure no damage occurred during shipping.

STEP 2.

Install a suitable flexible wiring system to the conduit opening per CEC/NEC requirements for the specific installation location, threading wiring through openings in the slip fitter, sheet metal yoke assemblies, and cheek plate adapter.

NOTE:

To aid in assembly and protect against ingress, a petrolatum or soap-thickened mineral oil-based thread lubricant/sealant is necessary.

If the fixture has unused conduit openings, plug them to maintain the enclosure's integrity.

STEP 3.

Attach the yoke mount band cheek plate adapter to the luminaire using 4 x M6 x 30mm hex bolts. Torque fasteners to 5 Nm (45 in-lbs).

STEP 4.

Attach yoke mount A to pole mount using 4 x 1/4-20 x 0.75in socket head cap screws, 8 x 1/4 inch washers, and 4 x 1/4-20 hex nuts. Torque fasteners to 5 Nm (45 in-lbs).

STEP 5.

Assemble yoke mount halves with carriage bolts on inside and washers and nuts on the outside.

NOTE:

Depending on which mounting hole is used in the curved slot, the luminaire may be configured for an upward or downward adjustable swing.

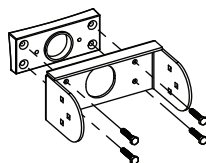
STEP 6.

Mount the luminaire with the slip-fitter assembly to a 2.375" OD pipe or tenon (corresponding to a 2" NPS pipe) and rotate it to the desired position. Secure by tightening the 3 x 3/8" hex bolts until secure, then tighten the jam nuts against the pole mount casting to lock them in place. Torque to 200 in-lbs (16.7 ft-lbs).

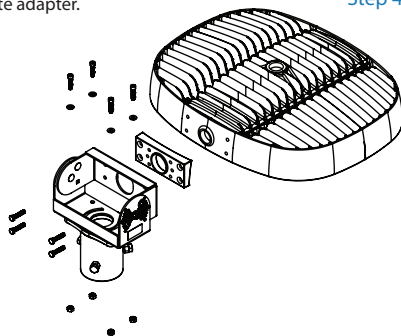
STEP 7.

Loosen fasteners connecting both halves of the yoke mount and adjust the luminaire to the desired pitch angle. Torque nuts to 9 N-m (80 in-lbs) to secure.

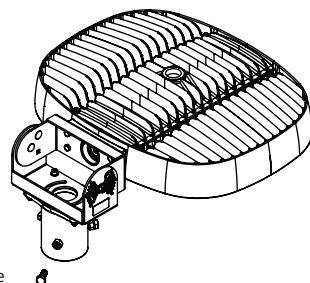
Step 3



Step 4, 5



Step 6

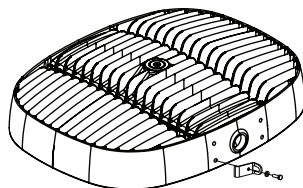


XR-SK-## – SECONDARY SAFETY KIT (Ordered Separately)

This XR-SK-## kit is intended for use with UL Listed XR luminaire as marked on the luminaire nameplate.

Accessory Package Contents

XR-SK-##	QTY	PART NAME
	1	1003-01-02-301 (ZLM SECONDARY SAFETY)
	1	M6 FLAT WASHER
	1	M6 x 20mm HEX CAP SCREW
	2	OVAL SHAPED THREADED CONNECTING LINK
	1	STAINLESS STEEL CHAIN, 1/8" TRADE SIZE



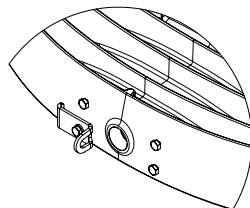
INSTALLATION STEPS

STEP 1.

Remove the bottom-left pre-installed M6 x 16mm hex cap screw.

STEP 2.

Install bracket on XR luminaire as shown using supplied M6 x 20mm hex cap screw. Torque M6 x 20mm hex cap screw to 40 in-lbs (4.5 Nm). It is strongly recommended that a medium or high-strength thread locker be used when installing the bracket. For units using surface or suspension mounting, install safety kit hardware on top of the surface mount or suspension mount brackets in the same location as shown.



Step 1

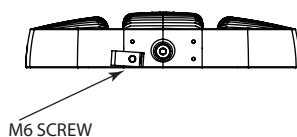
STEP 3.

Attach the stainless steel chain to the safety kit bracket using an oval, stainless steel threaded connecting link.

STEP 4.

Attach the loose end of the chain. The secondary safety mounting point must be suitable for supporting a minimum of 120 lbs:

- Attach the loose end of the stainless steel chain to a fixed eye bolt (not supplied) using the second stainless steel oval-shaped threaded connecting link.
- Alternate attachment method: Wrap the loose end of the chain around a fixed beam or other immovable support and create a closed loop using the second stainless steel oval-shaped threaded connecting link. The supporting beam or structure must form a closed loop to prevent the secondary safety chain from slipping off or becoming unhooked.



Step 2

