



NemaluxTM

Lighting That Improves Worksite Safety

TABLE OF CONTENTS

VALUE+

PAGE 3
INTRODUCTION

PAGE 4-5
INDUSTRIAL GRADE

PAGE 6-7
LAYOUT SUPPORT

PAGE 8
QUICK SELECTION GUIDE

PRODUCTS

PAGE 10-11
MR | XR

PAGE 12-13
AR | GS (AC/DC)

PAGE 14-15
BL | NL

PAGE 16-17
EXC | CANLED

PAGE 18-19
SPECIALTY / TEMPORARY
SUPPORT STRUCTURES

PAGE 20
GET IN-TOUCH

QR CONTACT



REQUEST INFO

QR CODES OFFER INSTANT ACCESS TO US & OUR PRODUCT DOCUMENTATION. ALL QR CODE LINKS HAVE LIVE CHAT ENABLED FOR REAL-TIME COMMUNICATION WITH OUR TEAM.

CERTIFICATIONS



UL LLC - SAFETY CERTIFICATION



UL LLC - MARINE RATING



AMERICAN BUREAU OF SHIPPING



INTERNATIONAL DARK-SKY ASSOCIATION



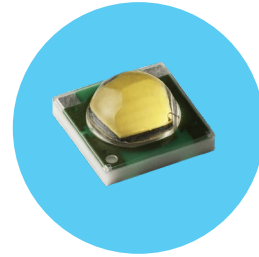
NATIONAL SANITATION FOUNDATION



DESIGN LIGHTS CONSORTIUM

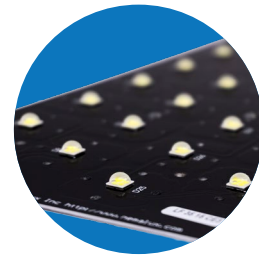
Nemalux
is the primary
Canadian
manufacturer of
harsh & hazardous
location
luminaires

INDUSTRIAL GRADE



Light Emitting Diode (LED)

Nemalux uses reliable, high-quality diodes from CREE, Samsung, and Nichia. Underpowering these diodes reduces heat stress and premature aging. Reducing the current flow by 50-70% of the rated max value extends the usable life of LEDs. This increases longevity and reliability in the demanding temperature extremes of harsh and hazardous environments.



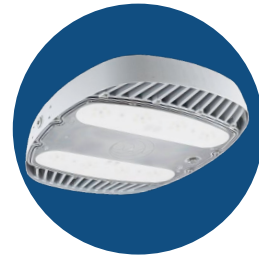
Light Engine (MCPCB)

A vital part of heat transfer from the LED to the external case is the metal core printed circuit board (MCPCB). This allows for a greater temperature range and extended luminaire performance by minimizing the component temperature increases. When practical the electrical systems utilize redundancy, enhancing reliability. The boards are field serviceable allowing future upgrades and onsite replacements. They have quick-connect components making them a solder-free installation. This also gives easy access to the light engines which improves onsite maintenance.



Secondary Optics

Optical control is instrumental in the lighting design and application process. Our modular optics deliver illumination where required and reduce light pollution. The use of secondary optics provides flexibility and enhances visual comfort. Nemalux's designers can suggest spacing, aiming and mounting heights for each project. As a result, projects receive improved visibility while reducing total cost of ownership.



Glare Reduction Lenses

Lack of adequate illumination is a common factor affecting safety on industrial sites. Glare and light trespass can also contribute to a lower level of safety. Sharp cutoff and glare reduction lenses from Nemalux provide visual comfort and acuity. Mounting height, tilt angle, and optics are other factors for a positive outcome.



Power Supplies

Hazardous location rated power supplies are a key part of many Nemalux lights. Programming features deliver tailored lighting effects, balancing thermal management and efficiency. Dimming is available on many luminaires using 0-10V technology. For most power supplies L90 values are a good indicator of system lifetime. Selecting products with multiple power supplies provides redundancy in case of failures.



Housing Design

Nemalux luminaires are constructed with a copper free aluminum alloy. These alloys are very effective heatsinks while resilient to chemicals and salt water. Anodizing or powder-coating provides increased resilience in hazardous and harsh environments. Nemalux's use of specialty powders provides multi-layer protection. This coating can withstand simultaneous exposure to corrosive chemicals, UV, and saltwater. Industrial enclosures can experience dramatic changes in temperature and humidity. Nemalux luminaires use pressure equalization vents with an IP66/67 rating. This helps relieve component stress and minimizes condensation effects. Advanced LED housing designs stimulate convective airflow and debris shedding. This lowers the operating temperatures for all electronics. Resulting in increased system life and ambient temperature range.



Mounting Hardware

The use of flexible mounting systems is instrumental for an optimized installation process. Nemalux's standard catalog includes an extensive range of brackets specific to each fixture. These diverse mounting options withstand severe vibration, impact, and chemical exposure. Optional secondary safety methods enhance fall protection. Short installation time reduces the cost of fixture placement. Additionally engineering, procurement, maintenance, and installation efforts are reduced.



Field Serviceability

Nemalux offers many luminaires with field serviceable components. This allows upgrades and maintenance opportunities beyond the warranty period. Bulb and ballast replacements were important for conventional High-Intensity Discharge lights that are designed with service in mind. The emergence of LED technology has caused a shift to non-serviceable / sealed systems. This approach is challenging and forces the disposal of valuable lights. A more effective approach is to replace aging components and extend the system life.

LAYOUT SUPPORT

Nemalux provides lighting design services for harsh and hazardous locations. These locations include Oil & Gas, Chemical, Mining, Heavy Industrial, Military & Aerospace, Municipal Infrastructure, Rail, and Marine Terminals.

Drawings or basic dimensional details allow lighting designers to run calculations and prepare reports. These illustrate future illumination results. Following suggested luminaire locations and mounting details streamlines the installation process. Supporting the successful delivery of complex projects.

Why Nemalux?

Durable Lighting Technology

LED luminaires for harsh and hazardous location use. Human-centric lighting that improves safety and productivity.

Versatile Deployment Options

Light fixtures featuring various optical and mounting options. Tailored lighting systems to address challenging projects.

Total Lifetime Value

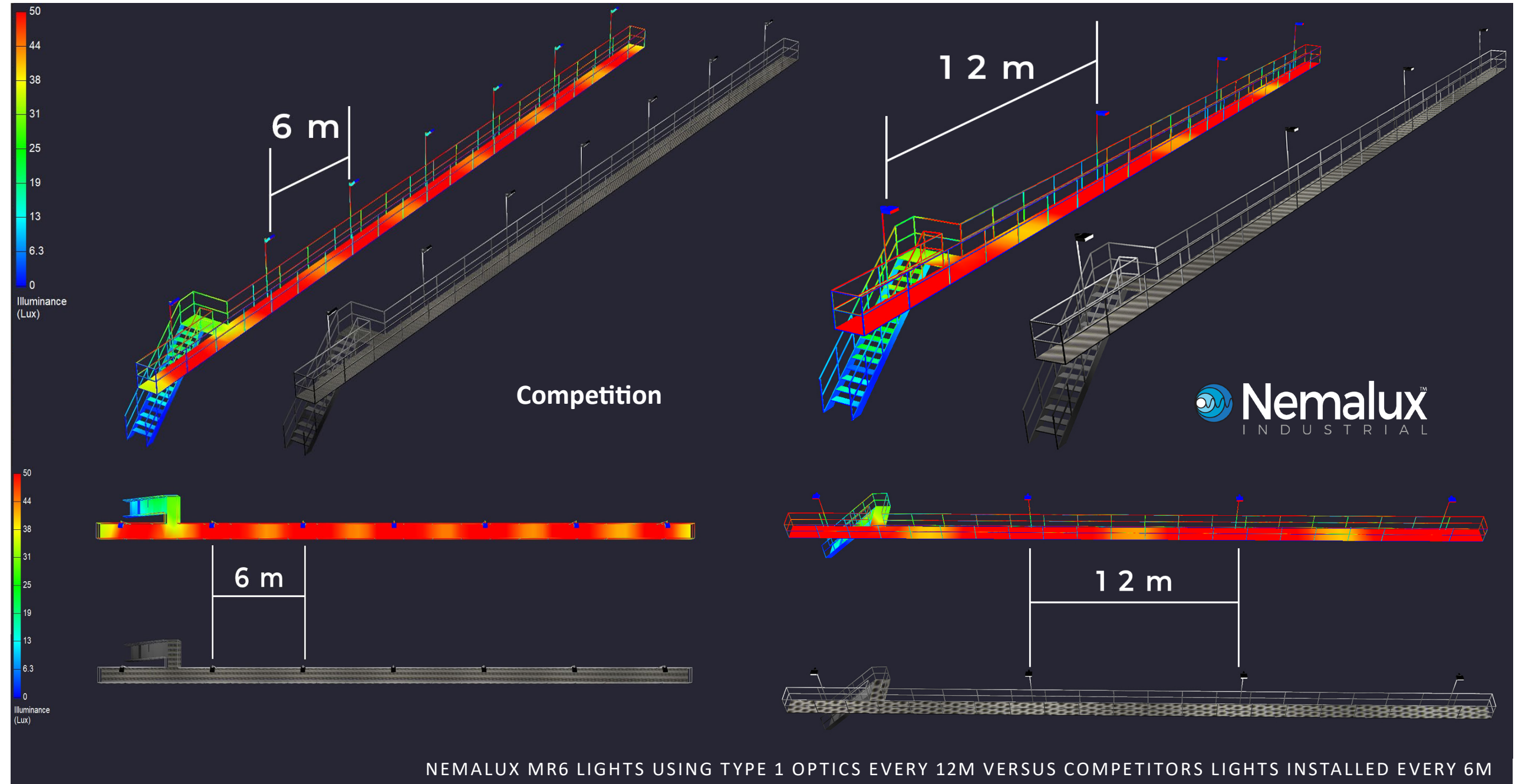
Lower initial cost, simplified installation, and field serviceable components result in excellent value

Expert Support Services

In-house lighting design and product engineering expertise. Lighting outcome-based philosophy vs a simplistic product-centric approach.

Short Lead Times

An extensive component stocking program with just-in-time manufacturing from our Canadian facility.



QUICK SELECTION GUIDE

Application	Nemalux Model	NEC/CEC CLASS I				NEC/CEC CLASS II				UL 1598		Lumen Output					Lens Material				Colour Temp.			Optical Profiles*					Environmental																					
		Div. 1	Div. 2	Zone 1	Zone 2	Div. 1	Div. 2	Zone 20	Zone 21	Zone 22	UL 1598	UL 1598A	500 - 5000	5000 - 10000	10000 - 20000	20000 - 30000	30000 - 50000	Polycarbonate	Glass	Clear	Frosted	3000 K	4000 K	5000 K	Wide Beam	Narrow Beam	Type 1	Type 2	Type 3	Type 4	Type 5	IP66	IP67	IP68**	Low Ambient	High Ambient														
Pole Mount	AR Series																																							-40°C	+55°C									
	XR Series																																									-50°C	+75°C							
	MR Series																																									-40°C	+55°C							
High Bay/ Low Bay	AR Series																																									-40°C	+55°C							
	XR Series																																										-50°C	+75°C						
	MR Series																																										-40°C	+55°C						
Yoke Mount	AR Series																																											-40°C	+55°C					
	XR Series																																											-50°C	+75°C					
	MR Series																																											-40°C	+55°C					
Linear	GS Series AC																																												-40°C	+65°C				
	GS Series DC																																												-40°C	+60°C				
	NL Series																																												-40°C	+53°C				
	BL Series																																												-50°C	+65°C				
Dark Sky Certified	AR Series																																													-40°C	+55°C			
	XR Series																																														-50°C	+75°C		
	MR Series																																														-40°C	+55°C		
	GS Series AC																																														-40°C	+65°C		
	GS Series DC																																														-40°C	+60°C		
Specialty	EXC Series																																																-50°C	+58°C
	CANLED Series																																																-40°C	+55°C
	XCANLED Series																																															-40°C	+55°C	
Temporary	LS Series																																																-20°C	+60°C
	ZLM Series																																																-40°C	+55°C

Notes:
 *Custom optics are available upon request
 **IP68 models are rated for General Location use only

PRODUCTS



MR SERIES



Fixture

4.6 kg | 10.4 lbs
(mounting bracket excluded)
11.5 in x 14.5 in x 2.5 in

c/w Slip Fitter Yoke Mount (MR-SFY)

3,000 – 6,000 lumen multi-functional luminaire

Features

- Designed for marine, harsh, and hazardous location use
- Optimized thermal management for all electronics
- Wide range of optical distribution patterns for superior lighting quality
- Approved for through-wiring of multiple units on a single circuit
- Built-in junction area for simplified termination
- 8 mounting options for deployment flexibility
- Field serviceable light engines, power supply and housing elements
- Submersible and fully encapsulated IP68 version (non-serviceable) is rated for general location use only

Technical Specs

Voltage: AC: 120-277 VAC (50/60 Hz) | HV: 347 VAC (50/60 Hz)

Ingress Protection: IP66 | IP67 | IP68 (General Location use only)

Temp Range: -40°C to +55°C

Certification: UL 844, UL 1598 & UL 1598A & UL 8750;

CSA C22.2 No. 137, CSA C22.2 No. 250.0, CSA C22.2 No. 250.13;

Class I, Division 2, Groups ABCD, T4;

Class II, Division 2, Groups FG, T4A; Class III;



XR SERIES



Fixture

8.1 kg | 17.8 lbs
(mounting bracket excluded)
18.74 in x 14.88 in x 3.78 in

c/w Slip Fitter Yoke Mount (XR-SFY)

8,000 – 20,000 lumen multi-functional luminaire

Features

- Designed for marine, harsh, and hazardous location use
- Thermal separation of LED and power supply allows max ambient temperatures of up to +75°C
- Wide range of optical distribution patterns for superior lighting quality
- Approved for through-wiring of multiple units on a single circuit
- Built-in junction area for simplified termination
- 8 mounting options for deployment flexibility
- Field serviceable light engines, power supply and housing elements
- Submersible and fully encapsulated IP68 version (non-serviceable) is rated for general location use only

Technical Specs

Voltage: AC: 120-277 VAC (50/60 Hz) | HV: 347-480 VAC (50/60 Hz)

Ingress Protection: IP66 | IP68 (General Location use only)

Temp Range: -50°C to +75°C

Certification: UL 844; UL 1598 & UL 1598A; UL 8750;

CSA C22.2 No. 250.0-08, CSA C22.2 No. 250.13-17, CSA C22.2 No. 137-18;

Class I, Division 2 Groups ABCD / Class I, Zone 2, Groups IIC;

Class II Division 2 Groups FG / Class I, Zone 22, Groups IIIB; Class III



Mounting Options (ordered separately)



Surface (MR-SM)

Suspension (MR-SM)

Pole (MR-PM)

Wall (MR-WM)

Yoke (MR-YM)

Hook (MR-HK)

Conduit (MR-CM)

Mounting Options (ordered separately)



Surface (XR-SM)

Pole (XR-PM)

Wall (XR-WM)

Yoke (XR-YM)

Hook (XR-HK)

Conduit (XR-CM)

High Vibration (XR-YK)

AR SERIES



Fixture

16.4 kg | 36.0 lbs
(mounting bracket excluded)

24.0 in x 20.0 in x 4.3 in

c/w Slip Fitter Yoke Mount (AR-SFY)

10,000 – 50,000 lumen multi-functional luminaire

Features

- Designed for marine, harsh, NSF and hazardous location use
- Housing geometry and specialty powder coat prevents debris buildup and staining
- Wide range of optical distribution patterns for superior lighting quality
- Approved for through-wiring of multiple units on a single circuit
- Built-in junction area for simplified termination
- 8 mounting options for deployment flexibility
- Field serviceable light engines, power supply and housing elements

Technical Specs

Voltage: AC: 120-277 VAC | HV: 347-480 VAC (50/60Hz)

Ingress Protection: IP66 | IP67

Temp Range: -40°C to +55°C

Certification: UL 844; UL 1598 & UL 1598A; UL 8750;

CSA 22.2 No. 137, CSA 22.2 No. 250.0, CSA 22.2 No. 250.13;

Class I, Division 2, Groups ABCD; | Class II, Division 2, Groups FG; Class III;

Class I, Zone 2, Groups IIC; | Class I, Zone 22, Groups IIIB;

NSF-2: Splash and Non-Food Zones;



Mounting Options (ordered separately)



Surface (AR-SM)

Pole (AR-PM)

Wall (AR-WM)

Yoke (AR-YM)

Hook (AR-HK)

Conduit (AR-CM)

High Vibration (AR-YK)

www.nemalux.com

GS SERIES



Fixture

GS-1: 0.8 kg | 1.8 lbs
- Length: 15.5 in

GS-2: 1.2 kg | 2.6 lbs
- Length: 26.5 in

GS-3: 1.8 kg | 3.9 lbs
- Length: 37.5 in

GS-4: 2.4 kg | 5.3 lbs
- Length: 48.5 in

500 – 5,000 lumen linear low-profile luminaire

Features

- Designed for marine, harsh, and hazardous location use
- 12 or 24 Volt DC as well as 120 Volt AC direct input circuit board / light engine
- Light weight and low-profile housing allow for deployment in complex areas
- Adjustable mounting brackets allows for 360° rotation
- Sealed housing provided with 3ft cable and cable gland
- Vented enclosure to prevent stress on electronics and gaskets
- 12 or 24 Volt DC submersible and fully encapsulated IP68 version (non-serviceable) is rated for general location use only

Technical Specs

Voltage: DC: 12: 11-16 VDC | 24: 22-28 VDC | 24H: 22-28 VDC

AC: 120 VAC ± 10% (60Hz)

Ingress Protection: IP66 | IP67 | IP68 (General Location use only)

Temp Range: -40°C to +65°C

Certification: UL 844, UL 1598, UL 1598A, UL 2108;

CSA 22.2 No. 137, CSA 22.2 No. 250.0;

Class I, Division 2, Groups ABCD, T4**;

Class II, Division 2, Groups FG, T6**; Class III;

Class I, Zone 2, Group IIC; Zone 22



GS-DC



GS-AC

Mounting Options



A - Adjustable Mounting Bracket

B - Carriage Bolt / Surface Mount

BL SERIES



c/w Adjustable Yoke Mount (BL-YM)

Fixture

2.9 kg | 6.4 lbs
(mounting bracket excluded)

18.43 in x 5.65 in x 3.93 in

2,000 – 4,000 lumen 18 inch linear luminaire

Features

- Designed for marine, harsh, and hazardous location use
- Lightweight replacement for conventional vapor tight lights
- Copper free aluminum housing with polycarbonate or glass lens
- Approved for through-wiring of multiple units on a single circuit
- Built-in junction area for simplified termination
- Field serviceable light engines, power supply and housing elements
- Submersible and fully encapsulated IP68 version (non-serviceable) is rated for general location use only

Technical Specs

Voltage: AC: 120-277 VAC (50/60 Hz) | HV: 347 VAC (50/60 Hz | General Location only)

Ingress Protection: IP66 | IP68 (General Location only)

Temp Range: -50°C to +65°C

Certification: UL 844; UL 1598 & UL 1598A; UL 8750;

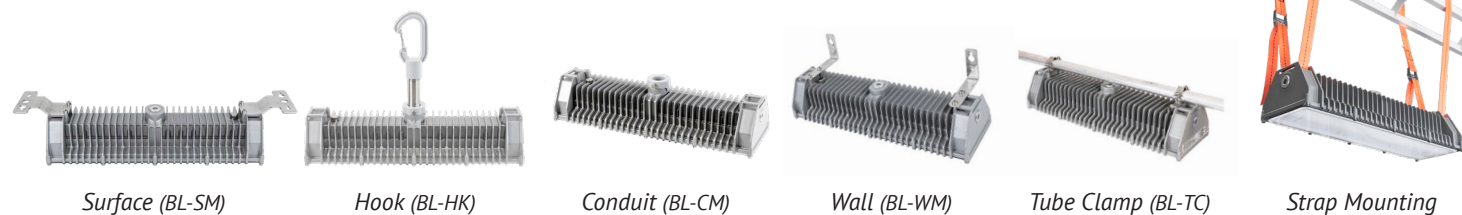
CSA 22.2 No. 250.0, CSA 22.2 No. 250.13, CSA 22.2 No. 137;

Class I, Division 2, Groups ABCD, T4A;

Class II, Division 2, Groups FG, T6; Class III;



Mounting Options (ordered separately)



Surface (BL-SM)

Hook (BL-HK)

Conduit (BL-CM)

Wall (BL-WM)

Tube Clamp (BL-TC)

Strap Mounting

www.nemalux.com

NL SERIES



4,000 – 14,000 lumen linear high output luminaire

Features

- Designed for marine, harsh, and hazardous location use
- High intensity linear LED replacement for conventional vapor tight lights
- Copper free, extruded aluminum housing with polycarbonate lens
- Approved for through-wiring of multiple units on a single circuit
- Built-in junction area for simplified termination
- Angle adjustable mounting bracket allows for 360° rotation
- Field serviceable light engines, power supply and housing elements

Technical Specs

Voltage: AC: 120-277 VAC (50/60 Hz) | HV: 347-480 VAC (50/60 Hz)

Ingress Protection: IP66

Temp Range: -40°C to +55°C

Certification: UL 844; UL 1598 & UL 1598A; UL 8750;

CSA 22.2 No. 137, CSA 22.2 No. 250.0, CSA 22.2 No. 250.13;

Class I, Division 2, Groups ABCD;

Class II, Division 2, Groups FG;

Class III;

Class I, Zone 2, Groups IIC; Class I, Zone 22, Groups IIIB



Fixture

NL-2: 5.3 kg | 12.0 lbs
- Length: 27.3 in

NL-4: 8.6 kg | 19.0 lbs
- Length: 50.8 in

Mounting Options (ordered separately)



Surface / Ceiling & Suspended Mount

Angle Adjustable Mount & Swivel Bracket



EXC SERIES

1,200 lumen explosion proof luminaire for confined space applications



Features

- Explosion-proof luminaire designed for confined space and low clearance applications
- Tested to withstand more than 2,500 psi internal pressure
- Built-in junction box with three 3/4" NPT entries on three sides
- Copper free, marine grade aluminum housing with glass lens
- Thermally managed for maximum longevity
- No arcing, sparking or hazardous temperature components

Fixture

4.4 kg | 9.8 lbs
(mounting bracket excluded)

11.5 in x 6.5 in x 3.76 in

Technical Specs

Voltage: AC: 120-277 VAC (50/60 Hz) | DC: 22-28 VDC

Ingress Protection: IP66

Temp Range: -50°C to +58°C

Certification: UL 844; UL 1598; UL 8750;

CSA 22.2 No. 250.0, CSA 22.2 No. 250.13, CSA 22.2 No. 137;

Class I, Division 1, Groups CD T5;

Class II, Division 1, Groups EFG T4A;

Class III, Division 1;

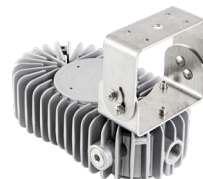
Class I, Zone 1, Group IIB; Class II, Zone 20, Group IIIC



Mounting Options (ordered separately)



Surface - built in



Yoke (EXC-YM) - ordered separately



CANLED SERIES

500 lumen hazardous location luminaire for remote applications



Features

- Designed for harsh, and hazardous location use
- Copper free, machined aluminum housing with polycarbonate lens
- Factory sealed with 6ft flying lead and cable gland
- Operates on 12 to 24 Volt DC direct input
- Small size allows for deployment in difficult locations
- Thermally managed for maximum longevity

Fixture

1.04 kg | 2.3 lbs
(mounting bracket excluded)

Ø3.47 in x 5.29 in [134mm]

Technical Specs

Voltage: 12-24 VDC

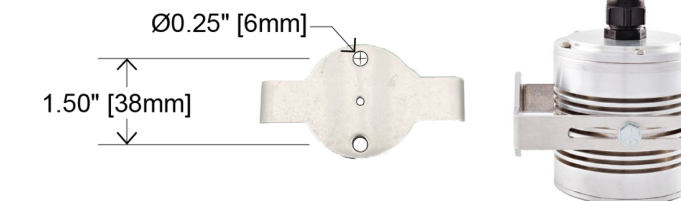
Ingress Protection: IP66

Temp Range: -40°C to +55°C

Certification: Class I, Division 2, Groups ABCD, T3



Mounting Bracket



NARROW BEAM



WIDE BEAM



FROSTED LENS



SPECIALTY

XCANLED Series

1,996 - 2,334 lumen fixture



IP66
GN & HZ

4.3 kg | 9.5 lbs
Ø7.0" x 5.0"



RS Series

9,098 - 28,560 lumen fixture



IP66
GN & HZ

16.3 kg | 36 lbs
15.23" x 23.42" x 10.41"



SUPPORT STRUCTURES

ARTSU

Articulating strut
pole assembly



IP66 / IP67
GN & HZ



Solar GS

Pre-assembled system

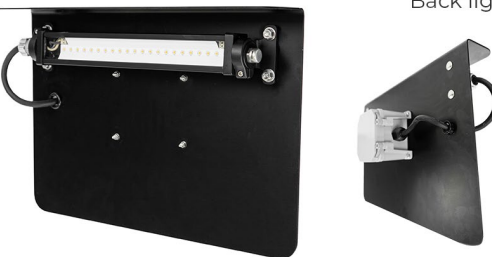


IP66 / IP67
GN & HZ



GS Shield

Back light prevention shield
c/w the GS Series



IP66 / IP67
GN & HZ



Swivelpole

Pre-wired & pre-assembled
c/w the MR Series
c/w the XR Series



IP66 / IP67
GN & HZ



Bullrail GS

c/w GS2 in protective case



IP66 / IP67
GN & HZ



Support Structures
Webpage

TEMPORARY

ZLM Series

22,000 - 28,000 lumen fixture



IP66
GN

10.0 kg | 22.0 lbs
15.5" x 6.8" x 7.1"



LS Series

1,550 lumens per module



IP66 / IP67
HZ

Up to 30 LED modules per string
1.2 kg | 2.6 lbs per module
9.7" x 3.3" per module





GET IN TOUCH

Safe & optimized lighting
for industrial projects.



Digital Copy



1018 - 72nd Ave NE | Calgary, AB, Canada T2E 8V9

Toll Free: 1-877-NEMALUX / 1-877-636-2589

P: 1.403.242.7475

F: 1.403.243.6190

E: info@nemalux.com

W: www.nemalux.com

