

XR Series Installation Manual



APPLICATION

XR luminaires are designed for use indoors, outdoors, wet locations, and areas containing moisture, dirt, corrosion, vibration, and rough usage. The XR luminaire is also certified for use on marine vessels inside, outside and in other severely wet saltwater environments. Models XRXX-XXX-XXX-XX-HZ-XX are certified for use in hazardous location areas.

XR luminaires are suitable for use in the following areas as defined by the National Electrical Code (NEC) and the Canadian Electrical Code (CEC):

UL File Numbers:	Nemalux General Location: E477827 Nemalux Hazardous Location: E477829
Standards that apply to all models:	UL 1598, UL 1598A and UL 8750; CSA C22.2 No. 250.0 and CSA C22.2 No. 250.13
Standards that apply only to Hazardous Location models (XRXX-XXX-XXX-XX-HZ-XX):	UL 844, CSA C22.2 No. 137
Hazardous Location Certification:	Class I, Division 2, Groups ABCD; Class II, Division 2, Groups FG; Class III; Class I, Zone 2, Group IIC; Zone 22
Housing:	Copper-free Cast Aluminum with Polycarbonate or Glass lens
Input Voltage:	Based on luminaire suffix in table below: Suffix - AC: 120-277 VAC Suffix - HV: 347-480 VAC

APPLICATION Cont.

Electrical Ratings:

LUMINANCE	INPUT VOLTAGE	RATED WATTAGE [Watts]	RATED VOLTAGE [Volts]	FREQUENCY [Hz]
XR8	AC	Flood: 47 Optic: 60	120-277	50/60
	HV	Flood: 49 Optic: 60	347-480	50/60
XR10	AC	Flood: 55 Optic: 75	120-277	50/60
	HV	Flood: 58 Optic: 75	347-480	50/60
XR12	AC	Flood: 84 Optic: 103	120-277	50/60
	HV	Flood: 91 Optic: 107	347-480	50/60
XR15	AC	Flood: 100 Optic: 118	120-277	50/60
	HV	Flood: 100 Optic: 120	347-480	50/60
XR17	AC	Flood: 120 Optic: 135	120-277	50/60
	HV	Flood: 120 Optic: 138	347-480	50/60
XR20	AC	Flood: 141 Optic: 156	120-277	50/60
	HV	Flood: 148 Optic: 160	347-480	50/60

Inrush Current: XR (AC): 65A peak, 1.2ms duration
 XR (HV): 65A peak, 1.2ms duration

Ambient Temperature Range:

LUMINANCE	Temp Range General Location (Deg C)	Temp Range Class 1 Division II (Deg C)	HazLoc Class 1 Division II T-Code	Temp Range Class 2 Division II / Zone 22 (Deg C)	HazLoc Class 2 Division II Zone 22 T-Code
XR8	-50 to 75	-50 to 75	T3C	-50 to 50	T3C
XR10	-50 to 74	-50 to 74	T3C	-50 to 50	T3C
XR12	-50 to 74	-50 to 74	T3C	-50 to 50	T3C
XR15	-50 to 67	-50 to 67	T3	-50 to 50	T3C
XR17	-50 to 67	-50 to 67	T3	-50 to 50	T3C
XR20	-50 to 67	-50 to 67	T3	-50 to 50	T3C

Connections: 3 x 3/4" NPT Conduit | Black: Line | White: Neutral/Line 2 | Green: Ground
 Optional: Violet (Purple): 0-10V Dimming (+) | Grey: 0-10V Dimming (-)
 For connections use wire rated to a minimum of 90°C. Class 1 Wiring only.
 All supply field wiring must be rated 300V minimum for luminaires with suffix AC, 600V minimum for luminaires with suffix HV.

Ingress Protection: IP66 | Suitable for wet locations. Marine outside type (salt water).

WARNING/ ATTENTION

To avoid the risk of fire, explosion, or electric shock, this product should be installed, inspected, and maintained by a qualified electrician only, in accordance with all applicable electrical codes.

Éviter tout risque d'incendie, d'explosion ou d'électrocution, ce produit doit être installé, inspecté et entretenu par un électricien qualifié uniquement, conformément à tous codes électriques applicables.

WARNING/ ATTENTION

To reduce the risk of electric shock, disconnect the luminaire from the supply circuit before opening for installation and servicing. Keep tightly closed when in operation.

Pour réduire le risque de choc électrique, débranchez le luminaire du circuit d'alimentation avant l'ouverture pour l'installation et entretien. Gardez hermétiquement fermé pendant le fonctionnement.



WARNING Potential Electrostatic Charging Hazard **ATTENTION** Risque potentiel de charge électrostatique

Avoid electrostatic discharge:

- Clean exterior lens surface with damp cloth only
- Éviter les décharges électrostatiques: nettoyer la surface extérieure de la lentille uniquement avec un chiffon humide

XR-SM – SURFACE/CEILING MOUNT INSTALLATION (Ordered Separately)

Refer to desired mounting section for specific mount instructions.

Wiring instructions are in the Surface/ Ceiling Mount section.

This XR-SM kit is intended for use with UL listed XR luminaire as marked on the luminaire nameplate.

Accessory Package Contents

XR-SM	QTY	PART NAME
	2	SURFACE/SUSPENSION MOUNT BRACKET
	4	M6 X 12mm HEX HEAD CAP SCREW
	4	M6 FLAT WASHER

INSTALLATION STEPS

STEP 1.

Inspect shipping package and contents to ensure no damage has occurred during shipping.

STEP 2.

Install surface/ceiling or suspension mount brackets using the 8x M6 hex cap bracket mounting screws. See the diagram for the orientation of brackets. Torque M6 bolts to 5 Nm (45 in-lbs).

STEP 3.

For surface/ceiling mounting configuration, mount luminaire in desired locations using 4x 1/4-20 OR 4x M6 fasteners and washers (Not provided). One mounting hole on each bracket is keyed to allow partial pre-installation of two fasteners for ease of install.

For suspension mounting configurations, connect 4x anchors to the 12.7mm (0.5") holes. Suspension hardware (Not provided) must be rated for a minimum of 180 lbs.

STEP 4.

Open XR Wiring Cover and allow cover to hang via retention strap.

Note:

Screws are captive and will remain attached to the cover for ease of reinstall and to prevent loss of fasteners.

STEP 5.

Make wiring connections from branch circuit conductors to factory provided lead wires using one of the 3/4" NPT threaded entries. Follow wiring method requirements of the Canadian Electrical Code or National Electrical Code for the specific location of the installation. If installing a hazardous location model (XRXX-XXX-XX-HZ-XX) in a hazardous location, follow the hazardous location wiring method requirements of the Canadian Electrical Code or National Electrical Code.

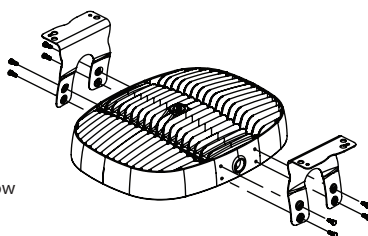
For 0-10V Analog Dimming Control. Ensure dimming control is certified and suitable for the classification of the area of installation. Connect Violet (Purple) (+) and Gray (-), driver lead wires, to 0-10VDC control wiring.



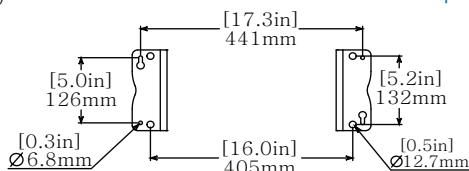
WARNING / ATTENTION

The XR head must not face upwards any degree beyond the horizontal position for Class II, Division 2, Zone 22 and Class III hazardous location installations.

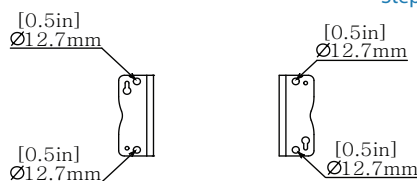
Le luminaire XR ne doit pas être orienté vers le haut à un degré quelconque au-delà de la position horizontale pour les installations en zones dangereuses de classe II, division 2, zone 22 et classe III.



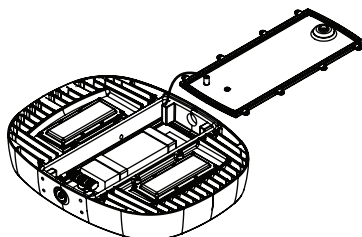
Step 2



Step 3A



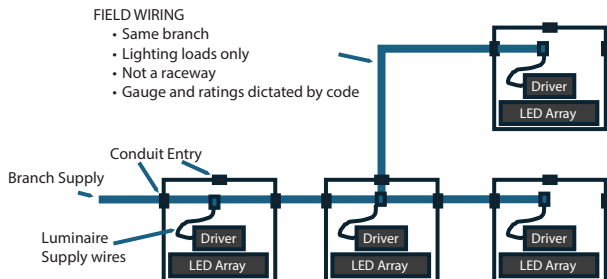
Step 3B



Step 5

INSTALLATION STEPS CONTINUED

STEP 5. CONTINUED.



Additional lighting fixtures can be connected in parallel to the same power supply circuit, as illustrated in the provided wiring diagram. It is essential to verify the electrical specifications indicated on each luminaire to ensure that the cumulative current draw does not surpass the rated amperage capacity (maximum permissible load) of the branch circuit protection device, such as a circuit breaker or fuse, located in the distribution panel.

For 0-10V Analog Dimming Control. Ensure dimming control is certified and suitable for the classification of the area of installation. Connect Violet (Purple) (+) and Gray (-), driver lead wires, to 0-10VDC wiring.

- LED Drivers will source a combined maximum of 200µA for control needs
- 0-10V Controller must sink current from LED driver 0-10V control connections

NOTE:

To aid in assembly and protect against ingress, use of a petrolatum or soap-thickened mineral oil-based thread lubricant/sealant is necessary.

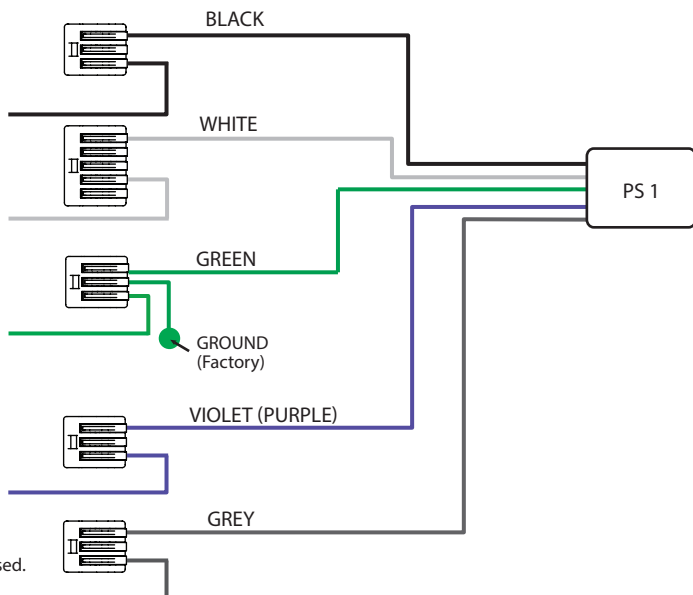
Un-used conduit opening must be plugged to maintain the integrity of the enclosure.

STEP 6.

Close the XR cover. Ensure the retention cable is not pinched between the XR head and the XR cover. Tighten the cover bolts to 1.7 N-m (15 in-lbs)

WIRING DIAGRAM

- BLACK - LINE
- WHITE - NEUTRAL/LINE 2
- GREEN - GROUND
- VIOLET(PURPLE) - DIM (+)
- GREY - DIM (-)



*Any additional wiring not shown has been capped by the factory and is not to be used.

XR-PM – POLE MOUNT INSTALLATION (Ordered Separately)

If using a different mounting accessory,
refer to the corresponding page.

This XR-PM kit is intended for use with UL listed XR luminaire as marked on the luminaire nameplate.



WARNING / ATTENTION

The XR head must not face upwards any degree beyond the horizontal position for Class II, Division 2, Zone 22 and Class III hazardous location installations.

Le luminaire XR ne doit pas être orienté vers le haut à un degré quelconque au-delà de la position horizontale pour les installations en zones dangereuses de classe II, division 2, zone 22 et classe III.

Accessory Package Contents

XR-PM	QTY	PART NAME
	1	POLE MOUNT
	1	POLE MOUNT GASKET
	4	M6 X 25mm HEX HEAD CAP SCREW
	4	M6 FLAT WASHER
	1	M6 X 16mm HEX HEAD CAP SCREW
	1	3/4 NPT THREADED SMOOTH BORE BUSHING



INSTALLATION STEPS

STEP 1.

Inspect shipping package and contents to ensure no damage has occurred during shipping.

STEP 2.

Install the provided plastic 3/4" bushing at the conduit entry. Used for supply connection to prevent wire abrasion.

STEP 3.

Install pole mount and gasket with adhesive side applied to mount using included M6 bolts and washers. Torque to 5 Nm (45 in-lbs).

STEP 4.

Thread luminaire assembly onto a 1.5" NPT pole.

NOTE:

To aid in assembly and protect against ingress, use of a petrolatum or soap-thickened mineral oil-based thread lubricant/sealant is necessary.

Un-used conduit opening must be plugged to maintain the integrity of the enclosure.

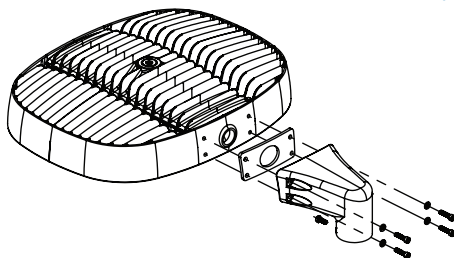
STEP 5.

Insert and tension M6 set screw to pole to lock rotation.

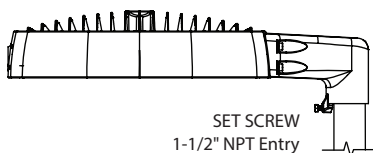
STEP 6.

Resume installation instruction provided with luminaire (STEP 4 on PAGE 3).

Step 3



Step 5



SET SCREW
1-1/2" NPT Entry

XR-WM – WALL MOUNT INSTALLATION (Ordered Separately)

If using a different mounting accessory,
refer to the corresponding page.

This XR-WM kit is intended for use with UL listed XR luminaire as marked on the luminaire nameplate.

Accessory Package Contents

XR-WM	QTY	PART NAME
	1	WALL MOUNT
	1	WALL MOUNT PLATE
	1	WALL MOUNT PLATE SIDE GASKET
	1	WALL MOUNT GASKET
	4	6 x 25mm SOCKET HEAD CAP SCREW
	4	M4x 10mm FLAT HEAD SOCKET CAP SCREW
	4	M6 FLAT WASHER
	3	3/4 NPT ENTRY PLUG
	1	3/4 NPT THREADED SMOOTH BORE BUSHING



⚠ WARNING / ATTENTION

The XR head must not face upwards any degree beyond the horizontal position for Class II, Division 2, Zone 22 and Class III hazardous location installations.

Le luminaire XR ne doit pas être orienté vers le haut à un degré quelconque au-delà de la position horizontale pour les installations en zones dangereuses de classe II, division 2, zone 22 et classe III.



INSTALLATION STEPS

STEP 1.

Inspect shipping package and contents to ensure no damage has occurred during shipping.

Steps 2 through 5

STEP 2.

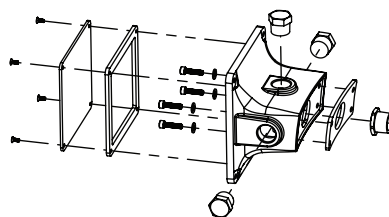
Install the provided 3/4" NPT conduit plugs in the desired locations on wall mount. To maintain the ingress rating all NPT entries not used for wiring connections are required to be plugged.

Torque to 10 Nm (88 in-lbs).

NOTE:

To aid in assembly and protect against ingress, use of a petrolatum or soap-thickened mineral oil-based thread lubricant/sealant is necessary.

Un-used onduit opening must be plugged to maintain the integrity of the enclosure.



STEP 3.

Install the provided plastic 3/4" bushing at the conduit entry used for supply connection to prevent wire abrasion, rotate so that flats are parallel to lens surface to avoid interference with mount hardware.

Step 6

STEP 4.

Install wall mount main body with the included M6 bolts and washers and adhesive-backed gasket. Apply gasket to mount with adhesive-backed side.

Torque to 5 Nm (45 in-lbs).

STEP 5.

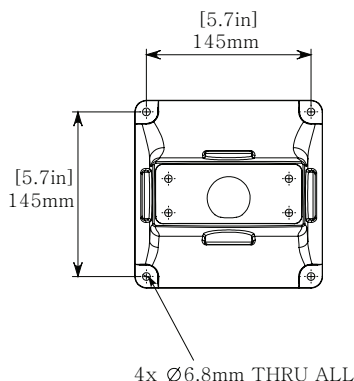
Install back cover plate with 4x M4 flat head screws and adhesive backed gasket. Apply gasket with adhesive side applied mount main body. Torque to 1.7 N-m (15 in-lbs).

STEP 6.

Mount luminaire assembly to desired location using 4x 1/4-20 OR M6 screws or bolts (not provided).

STEP 7.

Resume installation instruction provided with luminaire (STEP 4 on PAGE 3).



XR-WM2 – WALL MOUNT 2 INSTALLATION (Ordered Separately)

If using a different mounting accessory,
refer to the corresponding page.

This XR-WM2 kit is intended for use with UL listed XR luminaire as marked on the luminaire nameplate.

Accessory Package Contents

XR-WM2	QTY	PART NAME
	1	WALL MOUNT
	1	WALL MOUNT LID
	1	WALL MOUNT GASKET
	4	M6 x 25mm SOCKET HEAD CAP SCREW
	2	M6 x 20mm SOCKET HEAD CAP SCREW
	4	M6 FLAT WASHER
	3	3/4 NPT HEX CAP PLUG
	1	3/4 NPT THREADED SMOOTH BORE BUSHING
	1	WIRE EXTENSION KIT



WARNING / ATTENTION

The XR head must not face upwards any degree beyond the horizontal position for Class II, Division 2, zone 22 and Class III hazardous location installations.

Le luminaire XR ne doit pas être orienté vers le haut à un degré quelconque au-delà de la position horizontale pour les installations en zones dangereuses de classe II, division 2, zone 22 et classe III.



INSTALLATION STEPS

STEP 1.

Inspect shipping package and contents to ensure no damage has occurred during shipping.

STEP 2.

Install provided 3/4" NPT conduit plugs in desired locations on wall mount. To maintain the ingress rating, all NPT entries not used for wiring connections must be plugged. Torque to 10 Nm (88 in-lbs).

NOTE:

To aid in assembly and protect against ingress, use of a petrolatum or soap-thickened mineral oil-based thread lubricant/sealant is necessary.

Un-used conduit opening must be plugged to maintain the integrity of the enclosure.

STEP 3.

Open XR luminaire by removing cover bolts, note screws are captive for easy reinstallation. Install provided 3/4" smooth bore bushing in NPT entry to be used for supply wiring to prevent abrasion. Extend supply wires through bushing to prevent abrasion. Close XR & torque fasteners to 1.7 N-m (15 in-lbs).

STEP 4.

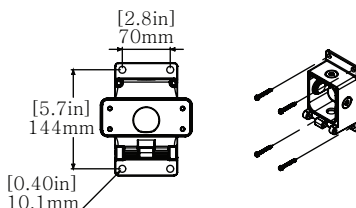
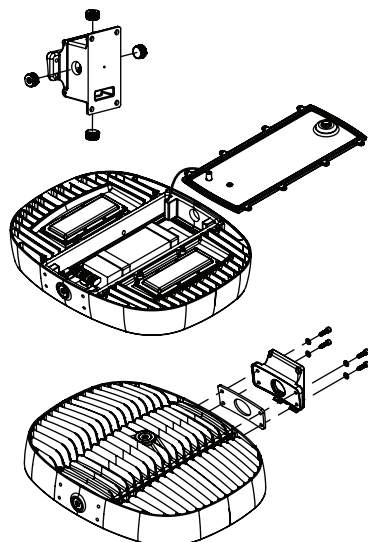
Attach the gasket to the WM2 cover face and then fasten it to the XR body with the provided M6 screws and washers. Torque to 5N-m (45in-lbs).

STEP 5.

Mount the WM2 base in the desired location through the 4 10mm (3/8") mounting holes using appropriate fasteners and washers for the supporting material (fasteners not provided).

STEP 6.

Route branch conductors to WM2 base. Follow the wiring method requirements of the Canadian Electrical Code or National Electrical Code for the specific location of the installation. If installing a hazardous location model (XRXX-XXX-XXX-XX-HZ-XX) in a hazardous location, follow the hazardous location wiring method requirements of the Canadian Electrical Code or National Electrical Code.



XR-WM2 – WALL MOUNT 2 INSTALLATION CONTINUED (Ordered Separately)

INSTALLATION STEPS CONTINUED.

STEP 7.

Hang the XR luminaire/WM2 cover over hinge pins in preparation for wiring.

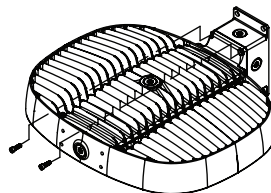
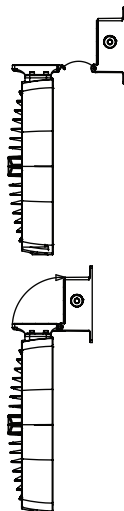
STEP 8.

Make wiring connections from luminaire wires to branch circuit conductors, ensuring bonding connection with WM2 base (wiring diagram on pg 4). Follow the wiring method requirements of the Canadian Electrical Code or National Electrical Code for the specific location of the installation. If installing a hazardous location model (XRX-XXX-XXX-XX-HZ-XX) in a hazardous location, follow the hazardous location wiring method requirements of the Canadian Electrical Code or National Electrical Code. For 0-10V analog dimming control, ensure dimming control is certified and suitable for the classification of the area of installation. Connect Violet (Purple) (+) and Gray (-) driver lead wires to 0-10VDC control wiring. LED drivers will source a combined maximum of 200 uA for control needs.

- 0-10V controller must sink current from LED driver via 0-10V control connections

STEP 9.

Swing XR/WM2 cover upward, closing the junction box. Care is required to ensure no wires are pinched between lid and body. Secure the lid to body with two provided M6 fasteners.



XR-YK – HIGH VIBRATION YOKE INSTALLATION (Ordered Separately)

If using a different mounting accessory,
refer to the corresponding page.

This XR-YK kit is intended for use with UL listed XR luminaire as marked on the luminaire nameplate.

Accessory Package Contents

XR-YK	QTY	PART NAME
	1	XR HIGH VIBRATION YOKE
	2	CHEEK PLATE
	8	M6 x 1 x 25mm SOCKET FLAT HEAD CAP SCREW
	4	M6 FLAT WASHER
	4	M6 x 1 x 16mm SOCKET HEAD CAP SCREW



⚠ WARNING / ATTENTION

The XR head must not face upwards any degree beyond the horizontal position for Class II, Division 2, Zone 22 and Class III hazardous location installations.

Le luminaire XR ne doit pas être orienté vers le haut à un degré quelconque au-delà de la position horizontale pour les installations en zones dangereuses de classe II, division 2, zone 22 et classe III.

INSTALLATION STEPS

STEP 1.

Inspect shipping package and contents to ensure no damage has occurred during shipping.

STEP 2.

Mount XR high-vibration yoke to mounting surface using a minimum of 4x ¼-20 or M6 fasteners (not provided).

STEP 3.

Make wiring connections from branch circuit conductors to factory-provided lead wires using one of the 3/4" NPT threaded entries. Follow the wiring method requirements of the Canadian Electrical Code or National Electrical Code for the specific location of the installation. If installing a hazardous location model (XRXX-XXX-XXX-XX-HZ-XX) in a hazardous location, follow the hazardous location wiring method requirements of the Canadian Electrical Code or National Electrical Code.

NOTE:

To aid in assembly and protect against ingress, use of a petrolatum or soap-thickened mineral oil-based thread lubricant/sealant is necessary.

Un-used conduit opening must be plugged to maintain the integrity of the enclosure.

STEP 4.

Mount XR cheek plates to sides of XR luminaire using 4x M6 flat head cap screws per side. Thread one cheek plate over installed wiring during assembly. Torque fasteners to 5 Nm (45 in-lbs).

STEP 5.

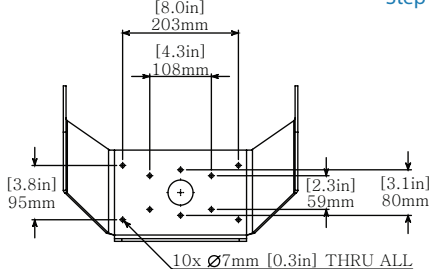
Thread installed wiring through opening in XR high vibration yoke mount and install XR luminaire into yoke. The raised circular bosses on the XR cheek plates should register inside of the large circular holes on the XR high-vibration yoke mount arms. Rotate luminaire to aim in the desired direction and fasten in place using 2x M6 socket head cap screws and flat washers per side. Torque fasteners to 5 Nm (45 in-lbs).

STEP 6.

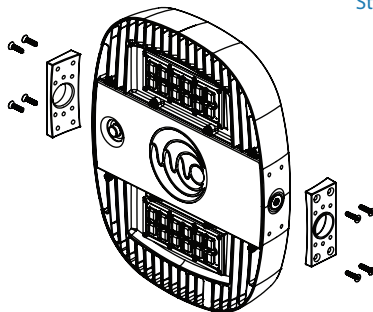
Resume installation instruction provided with luminaire (STEP 4 on PAGE 3).



Step 2



Step 4



XR-YM – YOKE MOUNT INSTALLATION (Ordered Separately)

If using a different mounting accessory,
refer to the corresponding page.

This XR-YM kit is intended for use with UL listed XR luminaire as marked on the luminaire nameplate.

Accessory Package Contents

XR-YM	QTY	PART NAME
	1	YOKE MOUNT A
	1	YOKE MOUNT B
	1	CHEEK PLATE
	4	1/4-20 HEX NUT
	4	1/4" FLAT WASHER
	4	1/4-20 x 0.5in CARRIAGE BOLT
	4	M6 x 25mm HEX HEAD CAP SCREW



⚠ WARNING / ATTENTION

The XR head must not face upwards any degree beyond the horizontal position for Class II, Division 2, Zone 22 and Class III hazardous location installations.

Le luminaire XR ne doit pas être orienté vers le haut à un degré quelconque au-delà de la position horizontale pour les installations en zones dangereuses de classe II, division 2, zone 22 et classe III.



INSTALLATION STEPS

STEP 1.

Inspect shipping package and contents to ensure no damage has occurred during shipping.

STEP 2.

Make wiring connections from branch circuit conductors to factory-provided lead wires using one of the 3/4" NPT threaded entries. Follow the wiring method requirements of the Canadian Electrical Code or National Electrical Code for the specific location of the installation. If installing a hazardous location model (XRXX-XXX-XXX-XX-HZ-XX) in a hazardous location, follow the hazardous location wiring method requirements of the Canadian Electrical Code or National Electrical Code.

NOTE:

To aid in assembly and protect against ingress, use of a petrolatum or soap-thickened mineral oil-based thread lubricant/sealant is necessary.

Un-used conduit opening must be plugged to maintain the integrity of the enclosure.

STEP 3.

Loosely assemble yoke mount with carriage bolts on the inside and washers and nuts on the outside.

NOTE:

Depending on which mounting hole is used in the curved slot, the luminaire may be configured for an upward or downward adjustable swing.

STEP 4.

Thread installed wiring through openings in yoke mount cheek plate and yoke mount bracket. Mount yoke assembly to luminaire using 4x M6 socket head cap screws and washers (provided). Torque fasteners to 5 Nm (45 in-lbs).

STEP 5.

Mount luminaire assembly to desired location using 4x 1/4-20 OR M6 screws or bolts (not provided).

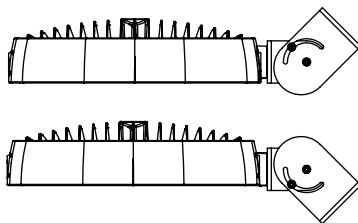
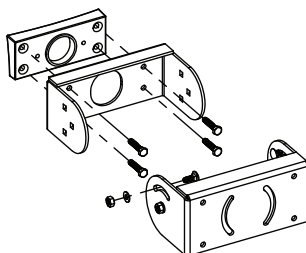
STEP 6.

Adjust and aim the luminaire to desired position. Torque hardware nuts to 9 N-m (80 in-lbs).

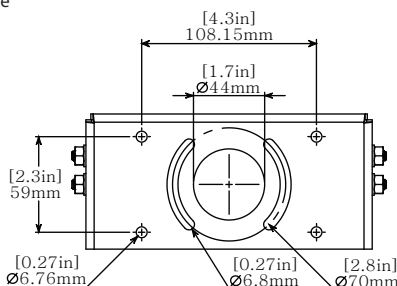
STEP 7.

Resume installation instruction provided with luminaire (STEP 4 on PAGE 3).

Step 3



Step 5



XR-SF – YOKE MOUNT w/ SLIPFITTER INSTALLATION (Ordered Separately)

If using a different mounting accessory, refer to the corresponding page.

This XR-SF mounting arrangement has not been evaluated for use in Hazardous locations. General locations only as marked on the luminaire nameplate.

Accessory Package Contents

XR-SF	QTY	PART NAME
	1	YOKE MOUNT A
	1	YOKE MOUNT B
	1	CHEEK PLATE
	1	SLIP FITTER / TENON
	4	1/4-20 x 0.625in CARRIAGE BOLT
	4	M6 x 30mm HEX HEAD CAP SCREW
	3	3/8-16 x 0.75in HEX HEAD CAP SCREW
	4	1/4-20 x 1in SOCKET HEAD CAP SCREW
	8	1/4-20 HEX NUT
	3	3/8-16 HEX NUT
	12	1/4in FLAT WASHER

INSTALLATION STEPS

STEP 1.

Inspect shipping package and its contents to ensure no damage occurred during shipping.

STEP 2.

Install suitable flexible wiring system to conduit opening per CEC/NEC requirements for specific installation location, threading wiring through openings in slip fitter, sheet metal yoke assemblies, and cheek plate adapter.

NOTE:

To aid in assembly and protect against ingress, use of a petrolatum or soap-thickened mineral oil-based thread lubricant/sealant is necessary.

Un-used conduit opening must be plugged to maintain the integrity of the enclosure.

STEP 3.

Attach yoke mount band cheek plate adapter to luminaire using 4 x M6 x 30mm hex bolts. Torque fasteners to 5 Nm (45 in-lbs).

STEP 4.

Attach yoke mount A to pole mount using 4 x 1/4-20 x 0.75in socket head cap screws, 8 x 1/4 inch washers, and 4 x 1/4-20 hex nuts. Torque fasteners to 5 Nm (45 in-lbs).

STEP 5.

Assemble yoke mount halves with carriage bolts on inside and washers and nuts on the outside.

NOTE:

Depending on which mounting hole is used in the curved slot, the luminaire may be configured for an upward or downward adjustable swing.

STEP 6.

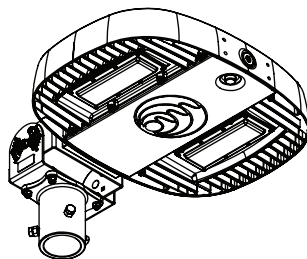
Mount luminaire with the slip-fitter assembly to a 2.375" OD pipe or tenon (corresponding to 2" NPS pipe) and rotate to desired position. Secure by tightening 3 x 3/8" hex bolts until secure, then tighten jam nuts against the pole mount casting to lock them in place. Torque to 200 in-lbs (16.7 ft-lbs).

STEP 7.

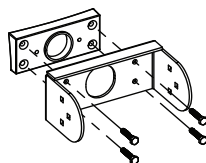
Loosen fasteners connecting both halves of yoke mount and adjust luminaire to the desired pitch angle. Torque nuts to 9 N-m (80 in-lbs) to secure.

STEP 8.

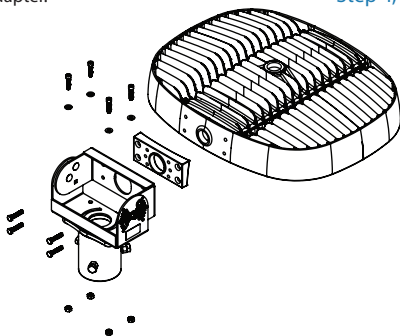
refer to installation instruction provided with luminaire (STEP 4 on PAGE 3) for wiring details.



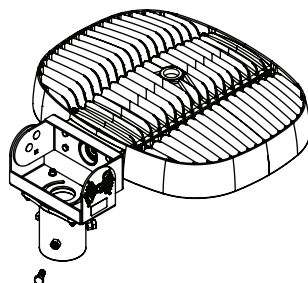
Step 3



Step 4, 5



Step 6



XR-HK – HOOK PENDANT INSTALLATION (Ordered Separately)

If using a different mounting accessory, refer to the corresponding page.

This XR-HK kit is intended for use with UL listed XR luminaire as marked on the luminaire nameplate.

Accessory Package Contents

XR-HK	QTY	PART NAME
	1	PENDANT HOOK ASSEMBLY
	1	ANTI-ROTATION ASSEMBLY

INSTALLATION STEPS

STEP 1.

Inspect shipping package and contents to ensure no damage has occurred during shipping.

STEP 2.

It is recommended to install secondary safety cables by looping appropriate steel cable or chain through the outer band of the unit and fastening a closed loop. Secondary safety hardware must be rated for a minimum of 110 lbs. Secondary safety cables made from stainless steel aircraft cable are available upon request.

STEP 3.

Slide anti-rotation lock onto suspension hook assembly and install hook assembly into 3/4" NPT threaded entry. Tighten to hand tight plus 1 to 2 turns. Slide anti-rotation lock into place and tighten set screw to lock unit in place.

NOTE:

To aid in assembly and protect against ingress, use of a petrolatum or soap-thickened mineral oil-based thread lubricant/sealant is necessary.

Un-used conduit opening must be plugged to maintain the integrity of the enclosure.

STEP 4.

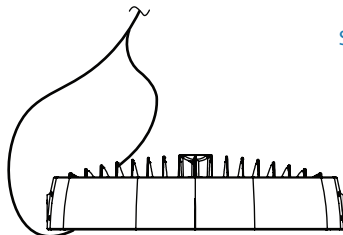
Latch hook onto eyebolt or other fixed mounting loop. Mounting point must be rated for a minimum of 110 lbs.

STEP 5.

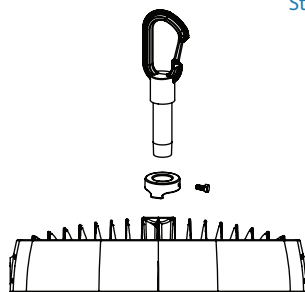
Install the remaining loop of secondary safety chain or steel cable to suitable mounting location and fasten securely.

STEP 6.

Resume installation instruction provided with luminaire (STEP 4 on PAGE 3).



Step 2



Step 3

XR-CC – CONDUIT MOUNT INSTALLATION (Ordered Separately)

If using a different mounting accessory,
refer to the corresponding page.

This XR-CC kit is intended for use with UL listed XR luminaire as marked on the luminaire nameplate.

Accessory Package Contents

XR-CC	QTY	PART NAME
	1	ANTI-ROTATION BRACKET ASSEMBLY

INSTALLATION STEPS

STEP 1.

Inspect shipping package and contents to ensure no damage has occurred during shipping.

STEP 2.

When using the XR-CC anti-rotation lock, slide it first onto a suitably mounted hanging conduit or luminaire hanger and loosely tightened the set screw. Fixed rigid metal conduit or luminaire hanger must be suitably mounted to prevent rotation, and the system must be rated for 110 lbs.

Install luminaire onto 3/4" NPT threaded nipple. Tighten to hand tight contact plus 1 to 2 turns. When using the XR-CC, loosen the set screw and slide XR-CC into place with flats aligned to those on the luminaire hub and tighten the set screw to lock the unit in place.

NOTE:

To aid in assembly and protect against ingress, a petrolatum or soap-thickened mineral oil-based thread lubricant/sealant is necessary.

Un-used onduit opening must be plugged to maintain the integrity of the enclosure.

STEP 3.

If you are utilizing the secondary safety cable, install it by looping the appropriate steel cable or chain through the outer band of the unit and fastening a closed loop. Secondary safety hardware must be rated for a minimum of 110 lbs.

Install the remaining loop of the secondary safety chain or steel cable in a suitable mounting location and fasten it securely. Secondary safety hardware must be rated for 110 lbs.

STEP 4.

Resume installation instruction provided with luminaire (STEP 4 on PAGE 3).



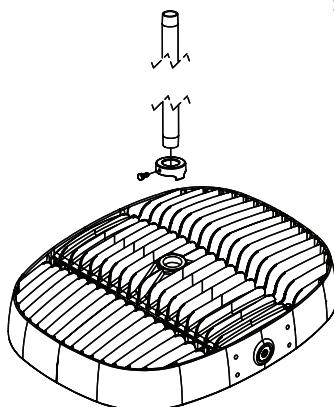
WARNING / ATTENTION

The XR head must not face upwards any degree beyond the horizontal position for Class II, Division 2, Zone 22 and Class III hazardous location installations.

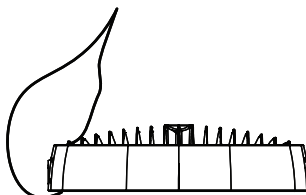
Le luminaire XR ne doit pas être orienté vers le haut à un degré quelconque au-delà de la position horizontale pour les installations en zones dangereuses de classe II, division 2, zone 22 et classe III.



Step 2



Step 3



XR-SFY – SLIP FITTER YOKE MOUNT (Ordered Separately)

If using a different mounting accessory,
refer to the corresponding page.

WARNING / ATTENTION

Listing for Class II, Division 2, Zone 22, Class III, Nonrecessed Marine Luminaire and the IP66 or IP66/67 rating are Limited to using the mount for mechanical support only and not part of the wiring system.

Luminaires marins de classe II, division 2, zone 22, classe III, non-encasté et la classification IP66 ou IP66 / 67 sont limitées à l'utilisation du support pour un support mécanique uniquement (l'entrée de conduit ¾" NPT couverte par le support doit être branchée à l'aide des bouchons fournis). Il n'est pas autorisé à être utilisé pour le système de câblage.

This XR-SFY kit is intended for use with UL listed XR luminaire as marked on the luminaire nameplate.

Accessory Package Contents

XR-SFY	QTY	PART NAME
	2	M6 X 16mm FLAT HEX HEAD SOCKET CAP SCREW
	1	SEALED CAP
	2	M8 X 25mm SOCKET HEAD CAP SCREWS
	6	3/8" HEX BOLTS
	4	M6 X 16mm HEX HEAD CAP SCREW
	1	SLIP FITTER YOKE MOUNT (2x PIECES)
	1	CAP GASKET

INSTALLATION STEPS

STEP 1.

Inspect shipping package and contents to ensure no damage has occurred during shipping. The SFY is shipped separate from the luminaire.

STEP 2.

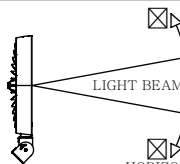
Remove both M6 flat head cap screws using a 4mm hex key and remove sealed cap. If the required angle is known, adjust luminaire angle by loosening two M8 socket head cap screws inside the slip fitter pole mount using a 6mm hex key. After aiming torque M8 socket head cap screws to 17N-m (13ft-lb).

NOTE:

The aiming angle can be adjusted after Step 7.

WARNING:
For Class II, Division 2, Zone 22, and Class III hazardous locations, the XR head must not face upwards by any degree beyond the vertical position.

ATTENTION:
Le luminaire (XR) ne doit pas être orientée vers le haut de quelque degré que ce soit au-delà de la position verticale pour les emplacements dangereux de Classe II, Division 2, Zone 22 et Classe III

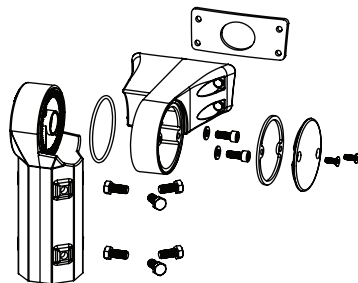




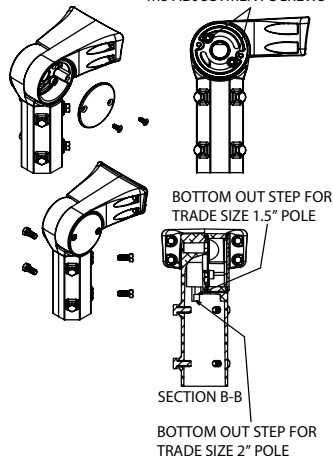
WARNING / ATTENTION

The XR head must not face upwards any degree beyond the horizontal position for Class II, Division 2, Zone 22 and Class III hazardous location installations.

Le luminaire XR ne doit pas être orienté vers le haut à un degré quelconque au-delà de la position horizontale pour les installations en zones dangereuses de classe II, division 2, zone 22 et classe III.



M8 ADJUSTMENT SCREWS



XR-SFY – SLIP FITTER YOKE MOUNT CONTINUED. (Ordered Separately)

INSTALLATION STEPS CONTINUED.

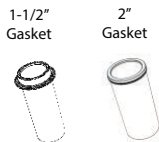
STEP 3.

Poles with sizing to 1.5" or 2" trade size pipe/conduit are acceptable.

Gaskets are provided for both 1.5" and 2" pole sizes.

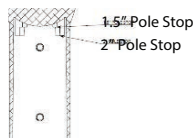
Install gasket for the size of pole being used by covering top of the pole.

Ensure slip fitter pinch bolts are not protruding into the slip fitter opening at all, this may damage the gasket or prevent proper installation if the bolt interferes with the next step.



STEP 4.

Install slip fitter onto pole to a depth of 145mm (5.7") for 1.5" 135mm (5.3") for 2" poles. Aim and secure slip fitter pole mount using the six provided 3/8" hex bolts. Torque to 27 N-m (20ft-lbs)



NOTE:

Aiming can be adjusted up to 180° in either direction after installation by loosening the 6 hex bolts and tightening again to 27 N-m (20ft-lbs). DO NOT TURN BEYOND 180° as this will induce twist and strain on conductors after wiring.



WARNING / ATTENTION

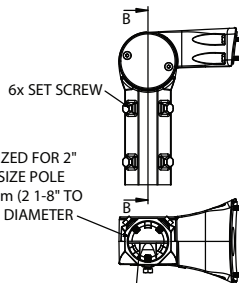
Warning: Listing for Class I, Division 2, Class II, Division 2, Zone 22, Class III, and Nonrecessed Marine Luminaire and the IP66 or IP66/67 rating are limited to using the mount for mechanical support only and not part of the wiring system.

Avertissement: Le classement de Classe I, Division 2, Classe II, division 2, Zone 22, Classe III et luminaires marins non-encastré et la classification IP66 ou IP66/67 sont limitées à l'utilisation du support uniquement pour le support mécanique et ne font pas partie du système de câblage.

For Installation in hazardous/classified locations note the warning above. Plug the 3/4" entry covered by mount with one of the supplied conduit plugs and install wiring system per local code into either top or other luminaire side entry.

STEP 5.

Install mount gasket to face between fixture and mount. Secure slip fitter pole mount with four M6 hex head cap screws provided using a 10mm socket. Torque to 7 N-m (62in-lbs).



STEP 6.

Install a suitable wiring system that complies with the wiring methods permitted in the Canadian Electrical Code or the National Electrical Code. Terminations are to be made inside the luminaire not inside the mount.

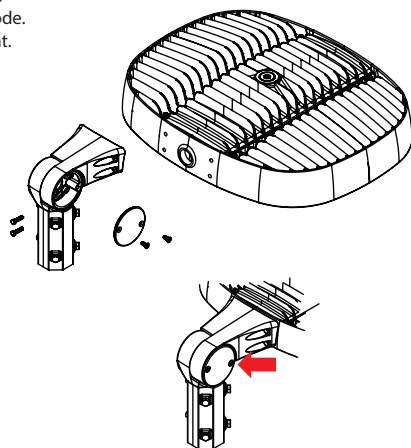
Step 7.

Close sealed cap on slip fitter pole mount.

Torque to 7 N-m (62in-lbs).

Step 8.

Follow the wiring instructions specified in the main installations provided with the XR luminaire as applicable for making connections with the luminaire lead wires and testing the system (STEP 4 on PAGE 3).



XR-SFY-1.5 – ADJUSTABLE POLE MOUNT (Ordered Separately)

*If using a different mounting accessory,
refer to the corresponding page.*

This XR-SFY-1.5 kit is intended for use with UL listed XR luminaire as marked on the luminaire nameplate.

Accessory Package Contents

XR-SFY-1.5	QTY	PART NAME
	2	M6 X 16mm FLAT HEX HEAD SOCKET CAP SCREW
	1	SEALED CAP
	2	M8 X 25mm SOCKET HEAD CAP SCREWS
	4	M6 X 16mm HEX HEAD CAP SCREW
	1	ADJUSTABLE POLE MOUNT (2x PIECES)
	1	CAP GASKET
	1	3/4" BUSHING



INSTALLATION STEPS

STEP 1:

Inspect shipping package and contents to ensure no damage has occurred during shipping.

STEP 2:

Install the provided plastic 3/4" bushing at the conduit entry used for supply connection to prevent wire abrasion.

STEP 3:

WARNING: To reduce the risk of ignition of hazardous atmospheres, disconnect the luminaire from the supply circuit before opening. Keep tightly closed when in operation.

ATTENTION: Pour réduire le risque d'inflammation des atmosphères dangereuses, débranchez le luminaire du circuit électrique avant d'ouvrir. Conserver hermétiquement fermé lorsqu'il est en fonctionnement.

Remove both M6 flat head cap screws using a 4mm hex key and remove sealed cap. If required angle is known, adjust fixture angle by loosening two M8 socket head cap screws inside the mount using a 6mm hex key Torque to 17N-m (13ft-lb).

NOTE:

Vertical angles can also be adjusted after step 6 via the two M8 socket head cap screws inside the mount.

STEP 4:

Install adjustable pole mount and gasket with adhesive side applied to mount and attach to luminaire with included M6 bolts and washers. Torque to 7 N-m (62 in-lbs)

STEP 5:

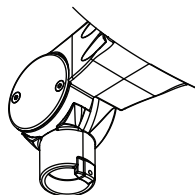
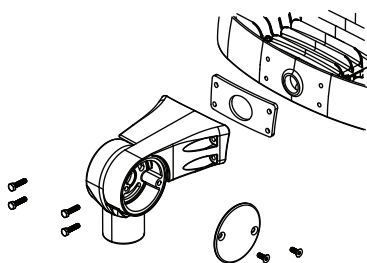
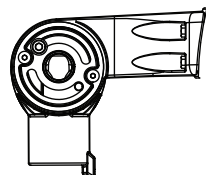
Thread mount assembly onto 1.5" NPT pole.

NOTE:

To aid in assembly and provide protection against ingress, use of a petrolatum or soap thickened mineral oil based thread lubricant/sealant is necessary at the threads of the slip fitter pole mount.

STEP 6:

Insert and tension M6 set screw to pole to lock rotation.



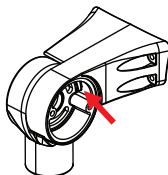
XR-SFY-1.5 – ADJUSTABLE POLE MOUNT CONT. (Ordered Separately)

INSTALLATION STEPS CONT.

STEP 7:

Install suitable wiring system that complies with the wiring methods acceptable for the specific location per the NEC and CEC. Terminations are to be made inside the luminaire not inside the mount.

Supply wires can be pulled through the center opening in mount and routed into the luminaire through the 3/4" bushing (installed before joining the luminaire to the mount).

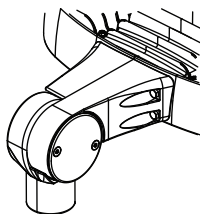


STEP 8:

Close sealed cap on SFY-1.5 Mount. Torque to 7 N-m (62in-lbs)

STEP 9:

Follow the wiring instructions specified in the surface/ceiling mount installation instructions section of this manual (STEP 4) for making connections with the luminaire lead wires and testing the system.



XR-SP-AC – SURGE SUPPRESSOR KIT (Ordered Separately)

This XR-SP-AC kit is intended for use with UL listed XR luminaire as marked on the luminaire nameplate.

Accessory Package Contents

XR-SP-AC	QTY	PART NAME
	1	BSP3-277-20KA SURGE PROTECTOR
	1	3M VHB TAPE
	1	4" ZIP TIE

INSTALLATION STEPS

STEP 1.

Inspect shipping package and contents to ensure no damage has occurred during shipping.

STEP 2.

Open XR wiring cover with 7mm hex socket driver. Allow lens to hang via retention strap.

NOTE:

Screws are captive and will remain attached to the lens for ease of reinstall and prevent loss of fasteners.

STEP 3.

Install provided double-sided tape along side of surge protector and secure it to XR body near AC input. Secure the surge protector and driver lead wires together as close as possible to the origin of the driver lead wires using the provided zip tie.

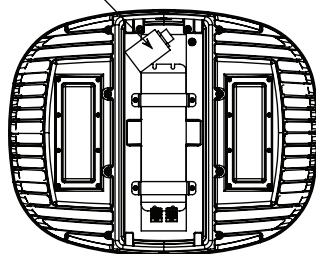
STEP 4.

Wire according to wiring instructions on page 18. Refer to NEC/CEC codes and follow all applicable local standards.

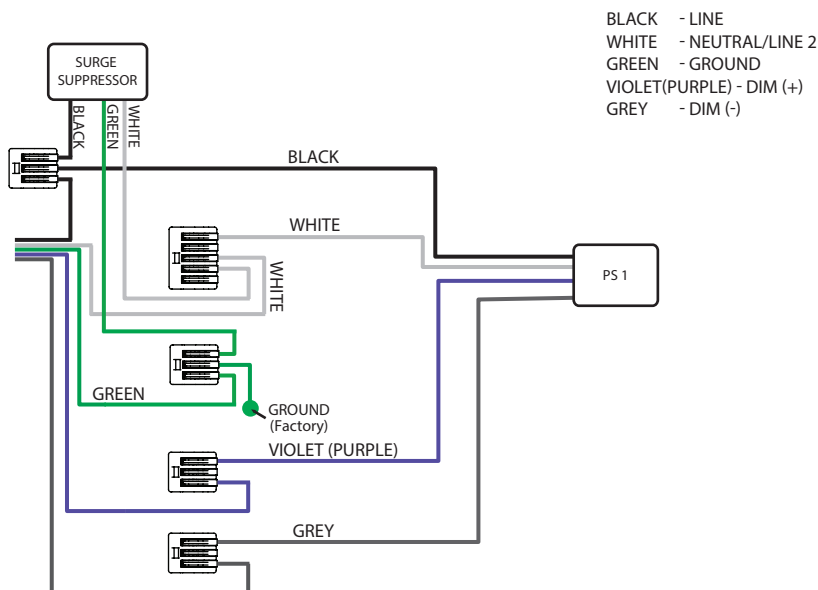
STEP 5.

Close XR wiring cover. Ensure the retention cable is not pinched between XR head and the XR wiring cover. Tighten bolts using a 7mm socket or box wrench to 1.7 N-m (15 in-lbs).

SURGE PROTECTOR LOCATION



(XR-SP-AC)



1. Connect the Black lead from surge protector to splice or terminal connected to Input branch circuit conductor and Black (line) lead from the LED driver.
2. Connect White lead from surge protector to splice or terminal connected to Neutral Input branch circuit conductor and White leads from the LED drivers.
3. Connect Green wire from the surge protector to splice or terminal connected to Grounding branch circuit conductor and Green lead from luminaire case.

XR-SP-HV – SURGE SUPPRESSOR KIT (Ordered Separately)

This XR-SP-HV kit is intended for use with UL listed XR luminaire as marked on the luminaire nameplate.

Accessory Package Contents

XR-SP-HV	QTY	PART NAME
	1	BSP3-480-20KA SURGE PROTECTOR
	1	3M VHB TAPE
	1	4" ZIP TIE

INSTALLATION STEPS

STEP 1.

Inspect shipping package and contents to ensure no damage has occurred during shipping.

STEP 2.

Open XR wiring cover with a 7mm hex socket driver. Allow cover to hang via retention strap.

NOTE:

Screws are captive and will remain attached to the cover for ease of reinstall and to prevent loss of fasteners.

STEP 3.

Install provided double-sided tape along side of the surge protector and secure to XR body near the AC input. Secure the surge protector and driver lead wires together as close to the origin of the driver lead wires as possible using the provided zip tie.

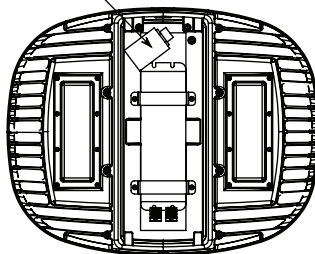
STEP 4.

Wire according to wiring instructions on pages 20. Refer to NEC/CEC codes and follow all applicable local standards.

STEP 5.

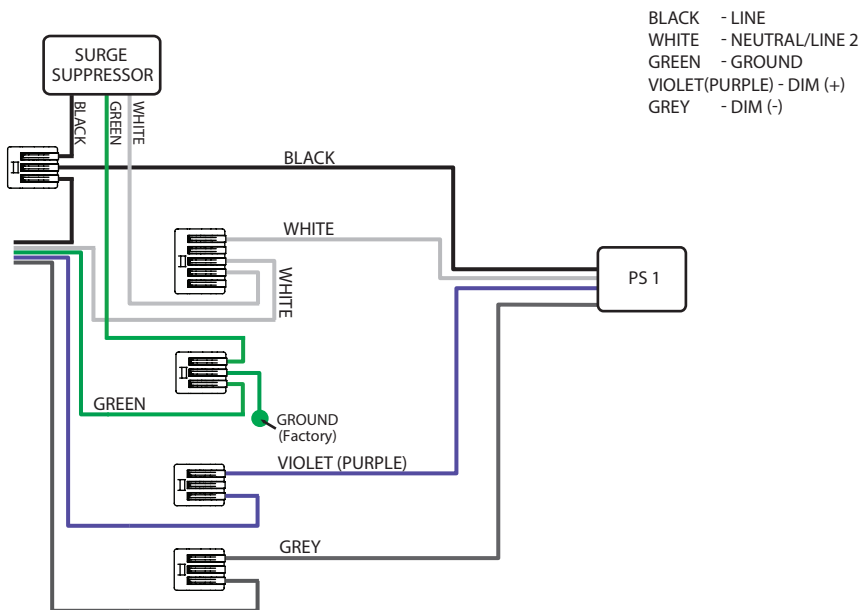
Close XR wiring cover. Ensure the retention cable is not pinched between XR head and the XR wiring cover. Tighten bolts using a 7mm socket or box wrench to 1.7 N-m (15 in-lbs).

SURGE PROTECTOR LOCATION



WIRING DIAGRAM

(XR-SP-HV)



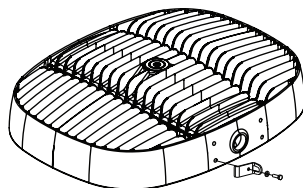
1. Connect the Black lead from surge protector to splice or terminal connected to Input branch circuit conductor and Black (line) lead from the LED driver.
2. Connect White lead from surge protector to splice or terminal connected to Neutral Input branch circuit conductor and White leads from the LED drivers.
3. Connect Green wire from the surge protector to splice or terminal connected to Grounding branch circuit conductor and Green lead from luminaire case.

XR-SK-## – SECONDARY SAFETY KIT (Ordered Separately)

This XR-SK-## kit is intended for use with UL Listed XR luminaire as marked on the luminaire nameplate.

Accessory Package Contents

XR-SK-##	QTY	PART NAME
	1	1003-01-02-301 (ZLM SECONDARY SAFETY)
	1	M6 FLAT WASHER
	1	M6 x 20mm HEX CAP SCREW
	2	OVAL SHAPED THREADED CONNECTING LINK
	1	STAINLESS STEEL CHAIN, 1/8" TRADE SIZE

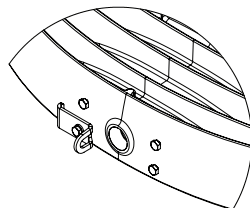


STEP 1.

Remove the bottom-left pre-installed M6 x 16mm hex cap screw.

STEP 2.

Install bracket on XR luminaire as shown using supplied M6 x 20mm hex cap screw. Torque M6 x 20mm hex cap screw to 40 in-lbs (4.5 Nm). It is strongly recommended that a medium or high-strength thread locker be used when installing the bracket. For units using surface/ceiling or suspension mounting, install safety kit hardware on top of the surface/ceiling mount or suspension mount brackets in the same location as shown.



Step 1

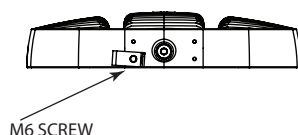
STEP 3.

Attach stainless steel chain to safety kit bracket using stainless steel oval shaped threaded connecting link.

STEP 4.

Attach loose end of the chain. Secondary safety mounting point must be suitable for supporting a minimum of 120 lbs:

- Attach loose end of stainless steel chain to fixed eye bolt (not supplied) using the second stainless steel oval-shaped threaded connecting link.
- Alternate attachment method: Wrap loose end of chain around fixed beam or other immovable support and create a closed loop using the second stainless steel oval-shaped threaded connecting link. Supporting beam or structure must form a closed loop to prevent the secondary safety chain from slipping off or becoming unhooked.



Step 2

